



**UTTLESFORD DISTRICT COUNCIL**

**OPEN SPACE UPDATE REPORT**

**JUNE 2024**

**Knight, Kavanagh & Page Ltd**  
Company No: 9145032 (England)

**MANAGEMENT CONSULTANTS**

Registered Office: 1 -2 Frecheville Court, off Knowsley Street, Bury BL9 0UF

T: 0161 764 7040 E: [mail@knp.co.uk](mailto:mail@knp.co.uk) [www.knp.co.uk](http://www.knp.co.uk)



0545 020

| Quality assurance  | Name | Date      |
|--------------------|------|-----------|
| Report origination | KKP  | Sept 2023 |
| Client comments    | UDC  | Sept 2023 |
| Revised version    | KKP  | June 2024 |
| Agreed sign off    | UDC  | June 2024 |

## **Contents**

PART 1: INTRODUCTION

PART 2: METHODOLOGY

PART 3: SUMMARY OF SITES

PART 4: PARKS AND GARDENS

PART 5: NATURAL AND SEMI-NATURAL GREENSPACE

PART 6: AMENITY GREENSPACE

PART 7: PROVISION FOR CHILDREN AND YOUNG PEOPLE

PART 8: ALLOTMENTS

PART 9: PROVISION STANDARDS

PART 10: FUTURE GROWTH SCENARIO

## **Glossary**

|       |  |
|-------|--|
| DDA   | Disability Discrimination Act  |
| DPD   | Development Plan Document  |
| DLUHC | Department of Levelling Up, Housing and Communities                                      |
| FIT   | Fields in Trust  |
| FOG   | Friends of Group   |
| GIS   | Geographical Information Systems   |
| KKP   | Knight, Kavanagh and Page  |
| LDF   | Local Development Framework  |
| LNR   | Local Nature Reserve   |
| MUGA  | Multi-Use Games Area (an enclosed area with a hard surface for variety of informal play) |
| NPPF  | National Planning Policy Framework   |
| NSALG | National Society of Allotment and Leisure Gardeners                                      |
| NSN   | Natural/Semi-Natural   |
| ONS   | Office of National Statistics  |
| PPG   | Planning Policy Guidance   |
| PPS   | Playing Pitch Strategy   |
| SOA   | Super Output Areas   |
| SPD   | Supplementary Planning Document  |
| SSSI  | Sites of Special Scientific Interest   |
| UDC   | Uttlesford District Council  |

# UTTLESFORD DISTRICT COUNCIL

## OPEN SPACE UPDATE

---

### PART 1: INTRODUCTION

This is the Open Space Update Report prepared by Knight Kavanagh & Page (KKP) for Uttlesford District Council (UDC). It provides detail with regard to what open space provision exists in the area, its condition, distribution and overall quality. It uses the 2019 Open Space Assessment, updated to reflect any known changes in provision and population, to set out the quantity, quality, and accessibility to open space.

The table below details the open space typologies included within the study:

*Table 1.1: Open space typology definitions*

| Typology                                | Primary purpose  |
|---|--|
| Parks and gardens                       | Accessible, high-quality opportunities for informal recreation and community events.   |
| Natural and semi-natural greenspaces    | Wildlife conservation, biodiversity and environmental education and awareness.   |
| Amenity greenspace                      | Opportunities for informal activities close to home or work or enhancement of the appearance of residential or other areas.  |
| Provision for children and young people | Areas designed primarily for play and social interaction involving children and young people, such as equipped play areas, MUGAs, skateboard areas and teenage shelters. |
| Allotments / community food growing     | Opportunities for those people who wish to do so to grow their own produce as part of the long-term promotion of sustainability, health and social inclusion.            |

For planning policies to be 'sound', local authorities are required to carry out a robust assessment of the need for open space, sport and recreation facilities. We advocate that the methodology to undertake such assessments should still be informed by best practice including the Planning Policy Guidance 17 (PPG17) Companion Guidance; *Assessing Needs and Opportunities* published in September 2002.

The National Planning Policy Framework (NPPF) has replaced PPG17. However, assessment of open space facilities is still normally carried out in accordance with the Companion Guidance to PPG17 as it remains the only national best practice guidance on the conduct of an open space assessment.

Under paragraph 102 of the NPPF, it is set out that planning policies should be based on robust and up-to-date assessments of the needs for open space, sports and recreation facilities and opportunities for new provision. Specific needs and quantitative and qualitative deficiencies and surpluses in local areas should also be identified. This information should be used to inform UDC what provision is required in an area.

In accordance with best practice recommendations<sup>1</sup>, a size threshold of 0.2 hectares has been applied to the inclusion of some typologies within the study. This means that, in general, sites that fall below this threshold are not included unless identified as being significant.

---

<sup>1</sup> A Companion Guide to PPG17

# UTTLESFORD DISTRICT COUNCIL

## OPEN SPACE UPDATE

---

### 1.1 Report structure

#### Open spaces

This report considers the supply and demand issues for open space provision across Uttlesford. Each part contains relevant typology specific data. Further description of the methodology used can be found in Part 2. The report covers the predominant issues for all open spaces as defined in best practice guidance:

Part 2: Methodology

Part 3: Summary of survey and audit scores

Part 4: Parks and gardens

Part 5: Natural/semi-natural greenspace

Part 6: Amenity greenspace

Part 7: Provision for children/young people

Part 8: Allotments

#### Associated strategies

The study sits alongside the indoor and built facilities interim report and Playing Pitch Strategy (PPS); also undertaken by KKP (provided in separate reports). The Companion Guidance to PPG17 included the open space typology of formal outdoor sports. This is predominantly covered within the associated PPS. The PPS is undertaken in accordance with the methodology provided in Sport England's Guidance 'Developing a Playing Pitch Strategy' for assessing demand and supply for outdoor sports facilities (2013).

Any site categorised as outdoor sports provision but with a clear multifunctional role (i.e., available for wider community use) is included in this study as a type of open space. Pitch or sport sites purely for sporting use are solely included within the PPS. For sites with a multifunctional role, double counting between the two studies does not occur, as the PPS looks at the number of pitch/sports facilities at a site and not hectares of land (as prescribed in Sport England Guidance).

### 1.2 National context

#### National Planning Policy Framework (2023), (DLUHC)

The National Planning Policy Framework (December 2023) (NPPF) sets out the planning policies for England. It details how these are expected to be applied to the planning system and provides a framework to produce distinct local and neighbourhood plans, reflecting the needs and priorities of local communities.

The NPPF states that the purpose of the planning system is to contribute to the achievement of sustainable development (paragraphs 7-9). It establishes that the planning system needs to focus on three themes of sustainable development: economic, social and environmental. A presumption in favour of sustainable development is a key aspect for any plan-making and decision-taking processes. In relation to plan-making the NPPF sets out that Local Plans should meet objectively assessed needs.

# UTTLESFORD DISTRICT COUNCIL

## OPEN SPACE UPDATE

---

Paragraph 102 of the NPPF establishes that access to a network of high-quality open spaces and opportunities for sport and physical activity is important for health and well-being. It states that planning policies should be based on robust and up-to-date assessments of the needs for open space, sports and recreation facilities and opportunities for new provision. Specific needs and quantitative or qualitative deficiencies and surpluses in local areas should also be identified. This information should be used to inform UDC what provision is required in an area.

As a prerequisite paragraph 103 of the NPPF states that existing open space, sports and recreation sites, including playing fields, should not be built on, unless:

- ◀ An assessment has been undertaken, which has clearly shown the site to be surplus to requirements; or
- ◀ The loss resulting from the proposed development would be replaced by equivalent or better provision in terms of quantity and quality in a suitable location; or
- ◀ The development is for alternative sports and recreational provision, the needs for which clearly outweigh the loss.

### 1.3 Local context

#### *Local Plan*

The new Uttlesford Local Plan will be part of the statutory planning framework for the district guiding decisions on all aspects of development. It will set out how and where new homes, jobs, services and infrastructure will be delivered and the type of places and environment that will be created.

Submission of the draft Local Plan occurred in December 2024 with Reg 19 consultation in summer 2024. This will be followed by a period of examination with the adopted Local Plan envisaged in early 2026.

This open space study will therefore act as an important evidence base to help inform future priorities and requirements.

# UTTLESFORD DISTRICT COUNCIL OPEN SPACE UPDATE

## PART 2: METHODOLOGY

This section details the methodology undertaken as part of the study. The key stages are:

- ◀ 2.1: Population
- ◀ 2.2: Auditing local provision
- ◀ 2.3: Quality and value
- ◀ 2.4: Quality and value thresholds
- ◀ 2.5: Identifying local need

### 2.1 Population

Figure 2.1 shows the district broken down into these analysis areas in tandem with population density. Population is considered in more detail below.

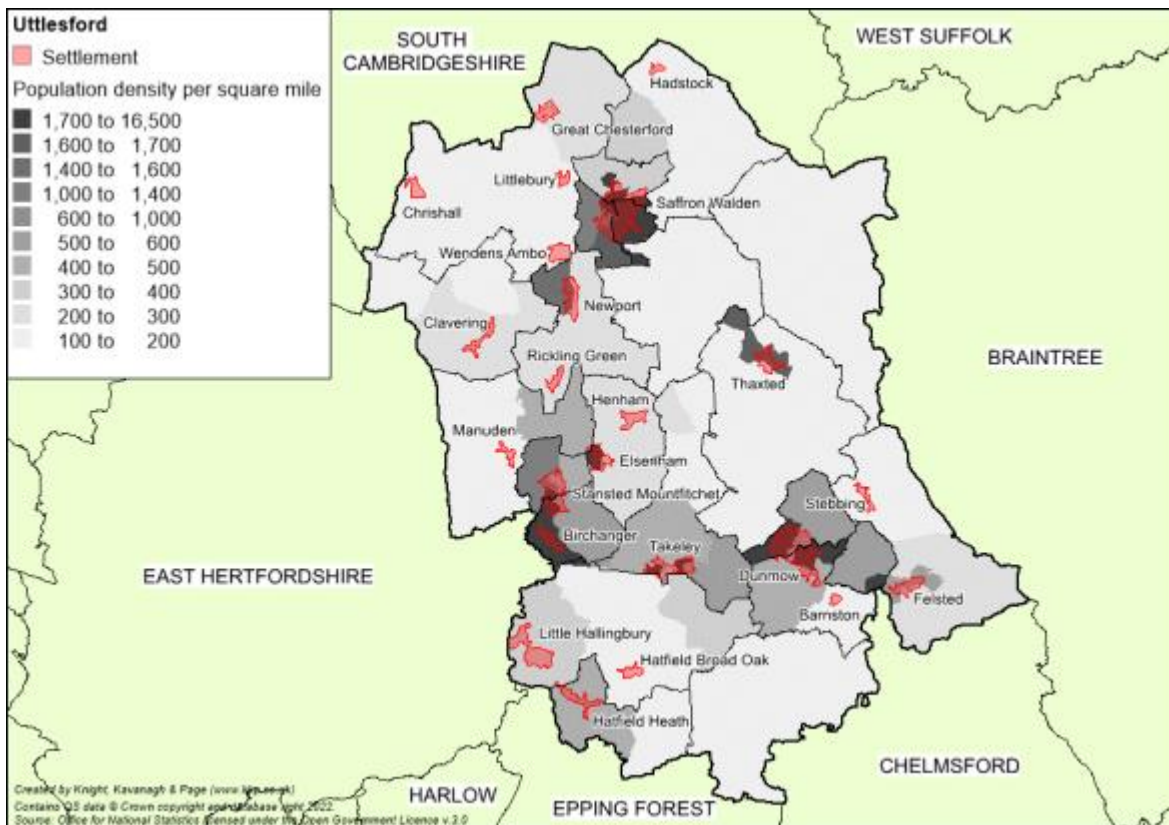


Figure 2.1: Map of Uttlesford District

# UTTLESFORD DISTRICT COUNCIL

## OPEN SPACE UPDATE

---

Table 2.1: Analysis areas and populations

| Analysis area         | Population <sup>2</sup> |
|-----------------------|-------------------------|
| Saffron Walden        | 14,970                  |
| Great Dunmow          | 10,642                  |
| Rural Area            | 57,460                  |
| Stansted Mountfitchet | 8,234                   |
| <b>Uttlesford</b>     | <b>91,306</b>           |

The population figures are used to help determine the current provision levels for different types of open space with each analysis area.

### 2.2 Auditing local provision (supply)

Open space sites (including provision for children and young people) are identified, mapped, and assessed to evaluate site value and quality. Only publicly accessible sites are included (i.e., private sites or land, which people cannot access, are not included). The KKP Field Research Team originally undertook the site audit for the previous study in 2018/19. This has been reviewed (in autumn 2023) via a desk-based exercise to reflect any obvious changes in provision including adding any new sites (identified via checking against OS Greenspace data). Any newly added site has been visited and assessed in order to be allocated a score. Each site is classified based on its primary open space purpose, so that each type of space is counted only once. The audit, and the report, utilise the following typologies:

- ◀ Parks & gardens
- ◀ Natural & semi-natural greenspace
- ◀ Amenity greenspace
- ◀ Provision for children & young people
- ◀ Allotments

In accordance with best practice recommendations, a size threshold of 0.2 hectares is applied to the inclusion of some typologies within the study. Sites of a smaller size, particularly for the typologies of amenity greenspace and natural and semi-natural greenspace tend to have a different role. Often this is for visual purposes (e.g. small incremental grassed areas such as highway verges) and is therefore considered as offering less recreational use in comparison to other forms of open space. Subsequently sites below 0.2 hectares for these typologies are not audited. However, any sites below the threshold (i.e., those that are identified through consultation as being of significance) are included.

### Database development

All information relating to open spaces is collated in the project open space database (to be supplied as an Excel electronic file). All sites identified and assessed as part of the audit are recorded within the database.

---

Source: ONS 2021 Mid-Year population estimates for England

# UTTLESFORD DISTRICT COUNCIL

## OPEN SPACE UPDATE

---

The database details for each site are as follows:

### Data held on open spaces database (summary)

- ◀ KKP reference number (used for mapping)
- ◀ Site name
- ◀ Ownership (if known)
- ◀ Management (if known)
- ◀ Typology
- ◀ Size (hectares)
- ◀ Site audit data

Sites are primarily identified by KKP in the audit using official site names, where possible, and/or secondly using road names and locations. Please note that there are numerous protected sites in villages and the countryside that are not mapped or included in the study. This study focuses more on sites within reach of settlements, therefore, there is not 100% coverage across the district. A 1000m buffer distance has been used on the analysis areas to help attribute any sites located outside of Saffron Walden, Great Dunmow and Stansted Mountfitchet.

### 2.3 Quality and value

Each type of open space receives separate quality and value scores. This also allows for application of a high and low quality/value matrix to further help determine prioritisation of investment and to identify sites that may be surplus within and to a particular open space typology.

Quality and value are fundamentally different and can be unrelated. For example, a site of high quality may be inaccessible and, thus, be of little value; whereas a poor quality space may be the only one in an area and thus be immensely valuable. As a result, quality and value are also treated separately in terms of scoring.

### Analysis of quality

Data collated is initially based upon those derived from the Green Flag Award scheme (a national standard for parks and green spaces in England and Wales, operated by Keep Britain Tidy). This is utilised to calculate a quality score for each site visited. Scores in the database are presented as percentage figures. The quality criteria used for the open space assessments carried out for all open space typologies are summarised in the following table.

### Quality criteria for open space site visit (score)

- ◀ Physical access, e.g., public transport links, directional signposts,
- ◀ Personal security, e.g., site is overlooked, natural surveillance
- ◀ Access-social, e.g., appropriate minimum entrance widths
- ◀ Parking, e.g., availability, specific, disabled parking
- ◀ Information signage, e.g., presence of site information, notice boards
- ◀ Equipment and facilities, e.g., adequacy and maintenance of provision such as seating, bins, toilets, etc.
- ◀ Site problems, e.g., presence of vandalism, graffiti
- ◀ Healthy, safe and secure, e.g., fencing, gates, staff on site
- ◀ Maintenance and cleanliness, e.g., condition of general landscape & features
- ◀ Groups that the site meets the needs of, e.g., elderly, young people

# UTTLESFORD DISTRICT COUNCIL

## OPEN SPACE UPDATE

---

For the provision for children and young people, criteria are also built around the Green Flag Award. It is a non-technical visual assessment, including general equipment and surface quality/appearance as well as of, for example, bench and bin provision. This differs, for example, from an independent Royal Society for the Prevention of Accidents (RosPA) review, which is a more technical assessment in terms of play and risk assessment grade.

### Analysis of value

Site visit data plus desk-based research is calculated to provide value scores for each site identified. Value is defined in best practice guidance in relation to the following three issues:

- ◀ Context of the site i.e., its accessibility, scarcity value and historic value.
- ◀ Level and type of use.
- ◀ The wider benefits it generates for people, biodiversity and the wider environment.

The value criteria set for audit assessment is derived as:

#### Value criteria for open space site visits (score)

- ◀ Level of use (observations only), e.g., evidence of different user types (e.g., dog walkers, joggers, children) throughout day, located near school and/or community facility
- ◀ Context of site in relation to other open spaces
- ◀ Structural and landscape benefits, e.g., well located, high quality defining the identity/ area
- ◀ Ecological benefits, e.g., supports/promotes biodiversity and wildlife habitats
- ◀ Educational benefits, e.g., provides learning opportunities on nature/historic landscapes
- ◀ Social inclusion and health benefits, e.g., promotes civic pride, community ownership and a sense of belonging; helping to promote physical and mental well-being
- ◀ Cultural and heritage benefits, e.g., historic elements/links (e.g., listed building, statues) and high profile symbols of local area
- ◀ Amenity benefits and a sense of place, e.g., attractive places that are safe and well maintained; helping to create specific neighbourhoods and landmarks
- ◀ Economic benefits, e.g., enhances property values, promotes economic activity, and attracts people from near and far

Children's and young people's play provision is scored for value as part of the audit assessment. Value in particular is recognised in terms of the size of sites and the range of equipment it offers. For instance, a small site with only one or two items is likely to be of a lower value than a site with a variety of equipment catering for wider age ranges.

### 2.4 Quality and value thresholds

To determine whether sites are high or low quality (as recommended by guidance); the results of the site assessments are colour-coded against a baseline threshold (high being green and low being red). The primary aim of applying a threshold is to identify sites where investment and/or improvements may be required. It can also be used to set an aspirational quality standard to be achieved in the future and to inform decisions around the need to further protect sites from future development (particularly when applied with its respective value score in a matrix format).

## UTTLESFORD DISTRICT COUNCIL OPEN SPACE UPDATE

---

A site rating low for quality should not automatically be viewed as being fit for development. It is also necessary to understand its value, access and role within the community it serves. It may for example be the only site serving an area and should therefore be considered a priority for improvement.

The most recognised national benchmark for measuring the quality of parks and open spaces is the 66% pass rate for the Green Flag Award. This scheme recognises and rewards well-managed parks and open spaces. Although this study uses a similar assessment criteria to that of the Green Flag Award scheme it is inappropriate to use the Green Flag benchmark pass for every open space as they are not all designed or expected to perform to the same exceptionally high standard. For example, a park would be expected to feature a greater variety of ancillary facilities (seating, bins, play equipment) and manicured landscaping and planting, etc. in contrast to an amenity greenspace serving a smaller catchment and fewer people.

Furthermore, a different scoring mechanism is used in this study to that of the Green Flag scheme (albeit criteria for this study are derived from the Green Flag scheme). For each open space typology, a different set and / or weighting for each criterion of quality is used. This is to better reflect the different roles, uses and functions of each open space type. Consequently, a different quality threshold level is set for each open space typology.

Quality thresholds in this study are individual to each open space typology. They are based on the average quality score arising from the site assessments and set using KKP's professional judgment and experience from delivering similar studies. The score is to help distinguish between higher and lower quality sites; it is a minimum expectation as opposed to an absolute goal. This works as an effective method to reflect the variability in quality at a local level for different types of provision. It allows the Council more flexibility in directing funds towards sites for enhancements, which is useful if funds are geographically constrained with respect to individual developments.

Reason and flexibility are needed when evaluating sites close to the average score / threshold. The review of a quality threshold is just one step for this process, a site should also be evaluated against the value assessment and local knowledge.

There is no national guidance on the setting of value thresholds, and instead a 20% threshold is derived from KKP's experience and knowledge in assessing the perceived value of sites.

A high value site is one deemed to be well used and offering visual, social, physical and mental health benefits. Value is also a more subjective measure than assessing the physical quality of provision. Therefore, a conservative threshold of 20% is set across all typologies. Whilst 20% may initially seem low - it is a relative score. One designed to reflect those sites that meet more than one aspect of the criteria used for assessing value (as detailed earlier). If a site meets more than one criterion for value it will score greater than 20%. Consequently, it is deemed to be of higher value.

# UTTLESFORD DISTRICT COUNCIL

## OPEN SPACE UPDATE

Table 2.2: Quality and value thresholds by typology

| Typology                                | Quality threshold | Value threshold |
|---|-------------------|-----------------|
| Parks and gardens                       | 60%               | 20%             |
| Natural and semi-natural greenspace     | 35%               | 20%             |
| Amenity greenspace                      | 45%               | 20%             |
| Provision for children and young people | 45%               | 20%             |
| Allotments                              | 40%               | 20%             |

### 2.5 Accessibility catchments

Accessibility catchments can be used as a tool to identify deficiencies of open space in a local area. This is achieved by applying them to create a distance catchment. The study displays the results of the catchments to highlight any potential gaps in access to provision.

There is an element of subjectivity resulting in time / distance variations. This is to be expected given that people walk at different speeds depending on a number of factors including height, age, levels of fitness and physical barriers on route. Therefore, there will be an element of 'best fit'.

## PART 3: SUMMARY OF SITES

### 3.1 Audit overview

Within Uttlesford there is a total of 311 sites, an increase of 27 sites since 2019, equating to over 694 hectares of open space, an increase of 8 hectares since 2019. The largest contributor to provision is natural and semi-natural greenspace (509 hectares); accounting for 73% of open space.

Table 3.1: Overview of open space provision

| Open space typology                   | Number of sites | Total amount (hectares) <sup>3</sup> |
|---------------------------------------|-----------------|--------------------------------------|
| Park and gardens                      | 7               | 9                                    |
| Natural & semi-natural greenspace     | 68              | 509                                  |
| Amenity greenspace                    | 119             | 147                                  |
| Provision for children & young people | 88              | 10                                   |
| Allotments                            | 29              | 19                                   |
| <b>TOTAL</b>                          | <b>311</b>      | <b>694</b>                           |

Natural and semi-natural greenspace in Table 3.1 includes Hatfield Forest. At 382 hectares, the site accounts for 75% of the total natural and semi-natural greenspace provision. As a SSSI/NNR it is sensitive to overuse and considered as being at capacity. Furthermore, there is a charge for entry. Consequently, some tables throughout the report omit the site to better demonstrate the need for natural/semi-natural greenspace.

Of the 311 sites, four sites do not receive a quality or value rating. Three of these are classified as natural and semi-natural greenspace. Of the natural sites, two appear

<sup>3</sup> Rounded to the nearest whole number

# UTTLESFORD DISTRICT COUNCIL

## OPEN SPACE UPDATE

inaccessible and one does not receive a score due to its late inclusion. The fourth site to not receive a quality/value rating is an allotment which was not viewable.

### 3.2 Quality

The methodology for assessing quality is set out in Part 2 (Methodology). The table below summarises the results of the quality assessment for open spaces across Uttlesford.

*Table 3.2: Quality scores for all open space typologies*

| Typology                              | Scores       |               |               | No. of sites |            |
|---------------------------------------|--------------|---------------|---------------|--------------|------------|
|                                       | Lowest score | Average score | Highest score | Low          | High       |
| Park and gardens                      | 55%          | 61%           | 68%           | 3            | 4          |
| Natural & semi-natural greenspace     | 18%          | 41%           | 61%           | 19           | 46         |
| Amenity greenspace                    | 24%          | 56%           | 84%           | 26           | 93         |
| Provision for children & young people | 30%          | 54%           | 75%           | 12           | 76         |
| Allotments                            | 32%          | 48%           | 66%           | 2            | 26         |
| <b>TOTAL</b>                          |              |               |               | <b>62</b>    | <b>245</b> |

There is generally a good level of quality across most open space sites. This is reflected in over three quarters (80%) of sites scoring above their set threshold for quality.

However, there are proportionally more parks and gardens (43%) scoring below the threshold. This is followed by natural and semi-natural provision (29%).

### 3.3 Value

The methodology for assessing value is set out in Part 2 (Methodology). The table below summarises the results of the value assessment for open spaces across Uttlesford

*Table 3.3: Value scores for all open space typologies*

| Typology                              | Scores       |               |               | No. of sites |            |
|---------------------------------------|--------------|---------------|---------------|--------------|------------|
|                                       | Lowest score | Average score | Highest score | <20%         | >20%       |
| Park and gardens                      | 37%          | 45%           | 54%           | 0            | 7          |
| Natural & semi-natural greenspace     | 7%           | 26%           | 45%           | 9            | 56         |
| Amenity greenspace                    | 16%          | 32%           | 60%           | 1            | 118        |
| Provision for children & young people | 20%          | 40%           | 55%           | 0            | 88         |
| Allotments                            | 22%          | 24%           | 32%           | 0            | 28         |
| <b>TOTAL</b>                          |              |               |               | <b>10</b>    | <b>297</b> |

The majority of sites (96%) are assessed as being above the threshold for value, reflecting the role and importance of open space provision to local communities and environments.

Allotments and natural and amenity greenspace have a higher proportion of low value provision than the other typologies.

# UTTLESFORD DISTRICT COUNCIL

## OPEN SPACE UPDATE

---

For natural greenspace, this reflects a lack of ancillary features at some sites leading to a lack of recreational use in comparison to other sites. However, the value these provide in offering a visual amenity can still be important.

A high value site is one that is well used by the local community, well maintained (potentially with a balance for conservation), provides a safe environment and has features of interest; for example, good quality play equipment and landscaping. Sites that provide for a cross section of users and have a multi-functional use are considered a higher value than those offering limited functions and viewed as unattractive.

### 3.4 Summary

- ◀ 311 sites are identified as open space provision. This is equivalent to over 694 hectares.
- ◀ This is an increase of 27 sites (approximately eight hectares) since the 2019 study.
- ◀ Of assessed sites, over three quarters (80%) rate above the quality threshold.
- ◀ All but 10 sites are assessed as above the value threshold; reflecting the importance of provision and its role offering social, environmental and health benefits.

# UTTLESFORD DISTRICT COUNCIL

## OPEN SPACE UPDATE

---

### PART 4: PARKS AND GARDENS

#### 4.1 Introduction

This typology often covers urban parks and formal gardens (including designed landscapes), which provide accessible high-quality opportunities for informal recreation and community events. Country Park sites may also provide opportunities and functions often associated with parks (if present).

#### 4.2 Current provision

There are seven sites classified as parks and gardens in Uttlesford, the equivalent of over nine hectares. There has been no change in this since 2019. No site size threshold has been applied and, as such, all known sites are included within the typology.

*Table 4.1: Distribution of parks*

| Analysis area         | Number of sites | Total hectares (ha) | Current provision (ha per 1,000 population) |
|-----------------------|-----------------|---------------------|---|
| Saffron Walden        | 5               | 8.87                | 0.59  |
| Great Dunmow          | -               | -                   | -   |
| Rural Area            | 2               | 0.15                | 0.002                                       |
| Stansted Mountfitchet | -               | -                   | -   |
| <b>Uttlesford</b>     | <b>7</b>        | <b>9.02</b>         | <b>0.10</b>                                 |

Uttlesford has a current provision level of 0.10 hectares per 1,000 head of population. The largest site and the biggest contributor to provision is The Common (5.53 ha). This is followed by Bridge End Gardens (3.00 ha). Both are located in Saffron Walden.

Three of the sites; Bridge Street, Dorset House and Station Road Memorial Garden are particularly small at 0.08, 0.06 and 0.03 hectares respectively.

Fields In Trust (FIT) suggests 0.80 hectares per 1,000 population as a guideline quantity standard. Table 4.1 shows that overall, Uttlesford is below this suggested standard.

Audley End Estate is a Registered Historic Park and Garden but is not included within the audit. Whilst the land has some Public Rights of Way across it, the site is not accessible to the public in the same way as other park sites. There is also an entrance fee to some parts of the site. Consequently, it is not considered a publicly accessible space.

#### 4.3 Accessibility

Figure 4.1 overleaf shows the location of parks provision across Uttlesford with a 15-minute walk time catchment applied. This is based on the catchments used in the 2019 study.

As can be seen in Figure 4.1, the majority of parks provision (five sites) is located in the settlement of Saffron Walden. This is the settlement with the highest population density. The other two settlements with parks provision are Elsenham and Thaxted.

# UTTLESFORD DISTRICT COUNCIL OPEN SPACE UPDATE

Whilst several settlements are without parks provision, they are generally in areas of lower population density. This is with the exception of settlements such as Great Dunmow, Birchanger and Stansted Mountfitchet. However, these settlements are served by other forms of open space such as amenity greenspace which may offer similar opportunities.

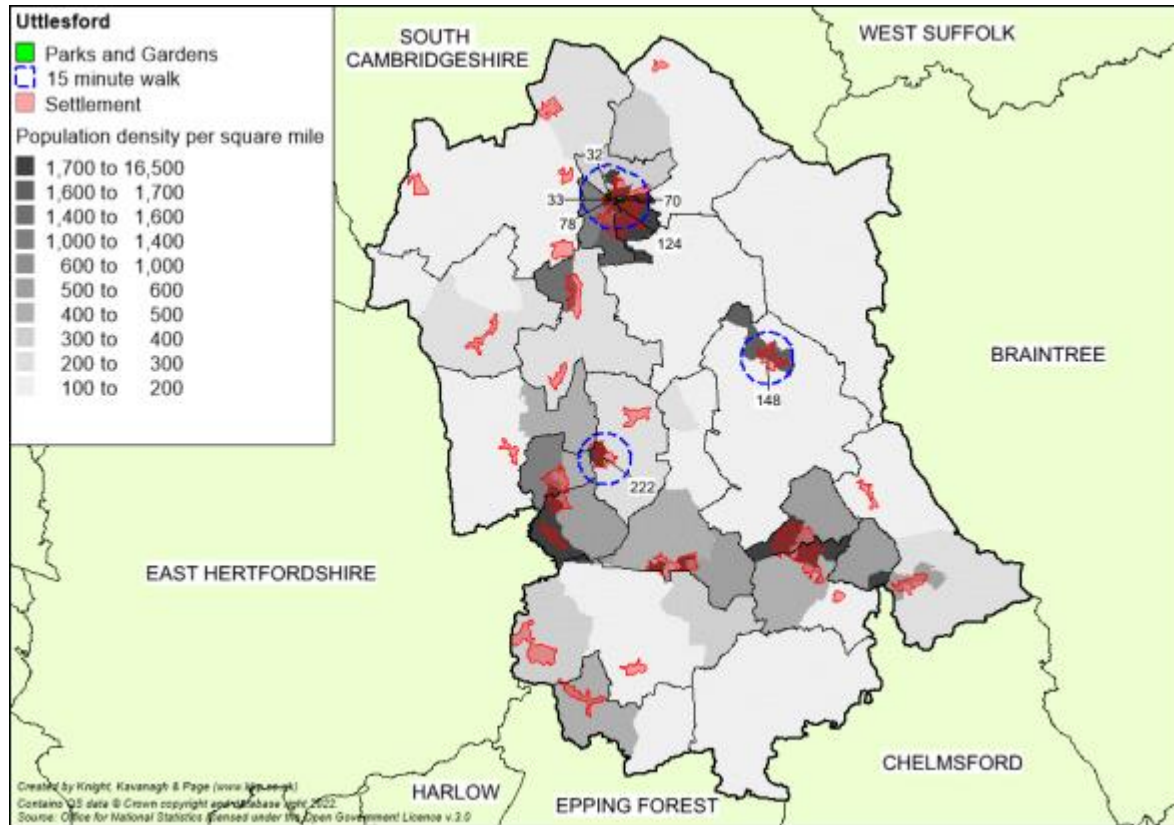


Figure 4.1: Parks and gardens mapped

Table 4.2: Key to sites mapped

| ID  | Site name                    | Settlement/<br>Parish area | Quality score | Value score |
|-----|------------------------------|----------------------------|---------------|-------------|
| 32  | Bridge End Gardens           | Saffron Walden             | 67.8%         | 54.5%       |
| 33  | Close Gardens                | Saffron Walden             | 59.7%         | 37.3%       |
| 70  | The Common                   | Saffron Walden             | 63.1%         | 40.9%       |
| 78  | Dorset House                 | Saffron Walden             | 63.1%         | 37.7%       |
| 124 | Jubilee Garden               | Saffron Walden             | 60.4%         | 48.2%       |
| 148 | Margaret Gardens             | Thaxted                    | 59.4%         | 45.5%       |
| 222 | Station Road Memorial Garden | Elsenham                   | 54.7%         | 52.7%       |

# UTTLESFORD DISTRICT COUNCIL

## OPEN SPACE UPDATE

### 4.4 Quality

To determine whether sites are high or low quality (as recommended by the Companion Guidance); scores from site assessments are colour-coded against a baseline threshold (high being green and low being red). The table summarises the results of the quality assessment for parks. A threshold of 60% is applied to identify high and low quality. Further explanation of how the quality scores and thresholds are derived can be found in Part 2 (Methodology).

Table 4.3: Quality ratings for parks in Uttlesford

| Scores (%)   |               |               | No. of sites |             |
|--------------|---------------|---------------|--------------|-------------|
| Lowest score | Average score | Highest score | Low (<60%)   | High (>60%) |
| 55%          | 61%           | 68%           | 3            | 4           |

Of the seven parks in Uttlesford, four (57%), rate above the threshold. Whilst three sites fall below the quality threshold, it is worth noting that two; Close Gardens and Margaret Gardens only do so marginally, scoring 59.7% and 59.4% respectively.

The highest scoring park in Uttlesford is Bridge End Gardens, with a score of 67.8%. The site is an attractive ornamental garden including a hedge maze. It is a Grade II Registered Park and Garden, highlighting its historical importance. This site is also identified in the residents' survey as a popular location to visit and is recognised as a local tourist attraction.

The Common is the second highest scoring site (alongside Dorset House). It is highlighted by Saffron Walden Town Council as a key site for the town. It also provides an important role for hosting community events. Consequently, it is a popular and well used site.

Sites scoring below the threshold for quality are generally smaller in size with fewer features when compared to higher scoring sites. They are, however, well maintained with attractive features/landscaping. None are reported to have significant quality issues.

### 4.5 Value

To determine whether sites are high or low value (as recommended by the Companion Guidance); the scores from the site assessments have been colour-coded against a baseline threshold (high being green and low being red). The table below summarises the results of the value assessment for parks. A threshold of 20% is applied to identify high and low value. Further explanation of how the value scores are derived can be found in Part 2 (Methodology).

Table 4.4: Value scores for parks in Uttlesford

| Scores (%)   |               |               | No. of sites |             |
|--------------|---------------|---------------|--------------|-------------|
| Lowest score | Average score | Highest score | Low (<20%)   | High (>20%) |
| 37%          | 45%           | 54%           | 0            | 7           |

# UTTLESFORD DISTRICT COUNCIL

## OPEN SPACE UPDATE

---

All parks score above the threshold for value. The two highest scoring sites are Bridge End Gardens and Station Road Memorial Garden. These sites score 54.5% and 52.7% respectively.

Bridge End Gardens scores higher for cultural and heritage value. It also benefits from additional economic value due to its role as a tourist attraction. Consultation with Saffron Walden Town Council highlights that the site is a popular attraction which is very well used, and which has a number of volunteers.

All parks provide opportunities for a wide range of users and demonstrate the high social inclusion, health benefits and sense of place that parks can offer.

One of the key aspects of the value placed on parks provision is their ability to function as a multipurpose form of open space provision. Parks provide opportunities for local communities and individuals to socialise and undertake a range of different activities, such as exercise, dog walking and taking children to the play area. Taking all this into account, parks and gardens are recognised as being heavily integrated into people's everyday lives.

### 4.6 Summary

#### **Parks and gardens**

- ◀ There are seven sites classified as parks and gardens in Uttlesford, the equivalent of over nine hectares.
- ◀ Fields In Trust (FIT) suggests 0.80 hectares per 1,000 population as a guideline quantity standard. Table 4.1 shows that overall, Uttlesford is below this suggested standard.
- ◀ Most of the park provision in Uttlesford (five sites) is in the settlement of Saffron Walden, the area of highest population density.
- ◀ Whilst several settlements are without parks provision, they are generally in areas of lower population density. This is with the exception of Dunmow, Birchanger and Stansted Mountfitchet. However, such settlements are served by other forms of open space.
- ◀ Of the seven parks in Uttlesford, four (57%), rate above the threshold.
- ◀ Those sites that score below the threshold for quality are smaller with fewer features when compared to higher scoring sites. They are, however, well maintained with attractive landscaping. None are reported to have significant quality issues.
- ◀ All sites are assessed as being of high value, with the important social interaction, health benefits, historic value and sense of place sites offer being recognised.

# UTTLESFORD DISTRICT COUNCIL OPEN SPACE UPDATE

## PART 5: NATURAL AND SEMI-NATURAL GREENSPACE

### 5.1 Introduction

The natural and semi-natural greenspace typology can include woodland (coniferous, deciduous, mixed) and scrub, grassland (e.g., down-land, meadow), heath or moor, wetlands (e.g., marsh, fen), wastelands (including disturbed ground), and bare rock habitats (e.g., cliffs, quarries, pits) and commons. For the purpose of this study, the focus is on sites providing wildlife conservation, biodiversity and environmental education and awareness.

### 5.2 Current provision

In total, 68 sites are identified as natural and semi-natural greenspace, totaling over 509 hectares of provision. There has been no change in this since 2019. These totals do not include all provision in the area as a site size threshold of 0.2 hectares has been applied. Sites smaller than this are likely to be of less or only limited recreational value to residents. However, they may still make a wider contribution to local areas, in relation to community viability, quality of life and health and wellbeing.

*Table 5.1a: Distribution of all natural and semi-natural greenspace*

| Analysis area         | Number of sites | Total hectares (ha) | Current provision (ha per 1,000 population) |
|-----------------------|-----------------|---------------------|---|
| Saffron Walden        | 3               | 1.23                | 0.08  |
| Great Dunmow          | 9               | 21.52               | 2.02  |
| Rural Area            | 55              | 465.93              | 8.11  |
| Stansted Mountfitchet | 1               | 20.45               | 2.48  |
| <b>Uttlesford</b>     | <b>68</b>       | <b>509.15</b>       | <b>5.58</b>                                 |

The largest of the natural and semi-natural greenspace sites is Hatfield Forest at 382 hectares. The site accounts for 75% of the total provision of natural and semi-natural greenspace. The site is managed and maintained by The National Trust.

The site is highlighted as suffering from impacts of recreational pressures. As a SSSI/NNR it is sensitive to overuse and considered as being at capacity. Furthermore, there is a charge for entry. On this basis, Table 5.1b shows quantity with Hatfield Forest omitted to better demonstrate the need for natural/semi-natural greenspace.

*Table 5.1b: Distribution of natural and semi-natural greenspace (excluding Hatfield Forest)*

| Analysis area         | Number of sites | Total hectares (ha) | Current provision (ha per 1,000 population) |
|-----------------------|-----------------|---------------------|---|
| Saffron Walden        | 3               | 1.23                | 0.08  |
| Great Dunmow          | 9               | 21.52               | 2.02  |
| Rural Area            | 54              | 84.07               | 1.46  |
| Stansted Mountfitchet | 1               | 20.45               | 2.48  |
| <b>Uttlesford</b>     | <b>67</b>       | <b>127.29</b>       | <b>1.39</b>                                 |

# UTTLESFORD DISTRICT COUNCIL OPEN SPACE UPDATE

Fields In Trust (FIT) suggests 1.80 hectares per 1,000 population as a guideline quantity standard. Table 5.1a illustrates that Uttlesford is above this suggested standard. However, as shown in Table 5.1b, if Hatfield Forest is omitted due to capacity/usage pressures, Uttlesford is below the FIT standard.

## 5.3 Accessibility

Figures 5.1, 5.2 and 5.3 show natural and semi-natural greenspace mapped against two different catchments; a 30-minute drive time and a 15-minute walk time. This is based on the catchments used in the 2019 study.

Mapping shows a good distribution of natural and semi-natural greenspace provision with most areas of higher population appearing to have access to provision of some kind. However, gaps against the walk time catchment are observed. Most noticeably to settlements with greater population densities such as Newport, Stansted Mountfitchet, Felsted and Great Dunmow (west).

The rural nature of the district, with easier access to the countryside, impacts upon resident expectations in terms of natural greenspace availability. Consultation with parish/town councils and via the community survey in 2019 highlights the presence and use of the network of footpaths leading to the surrounding countryside.

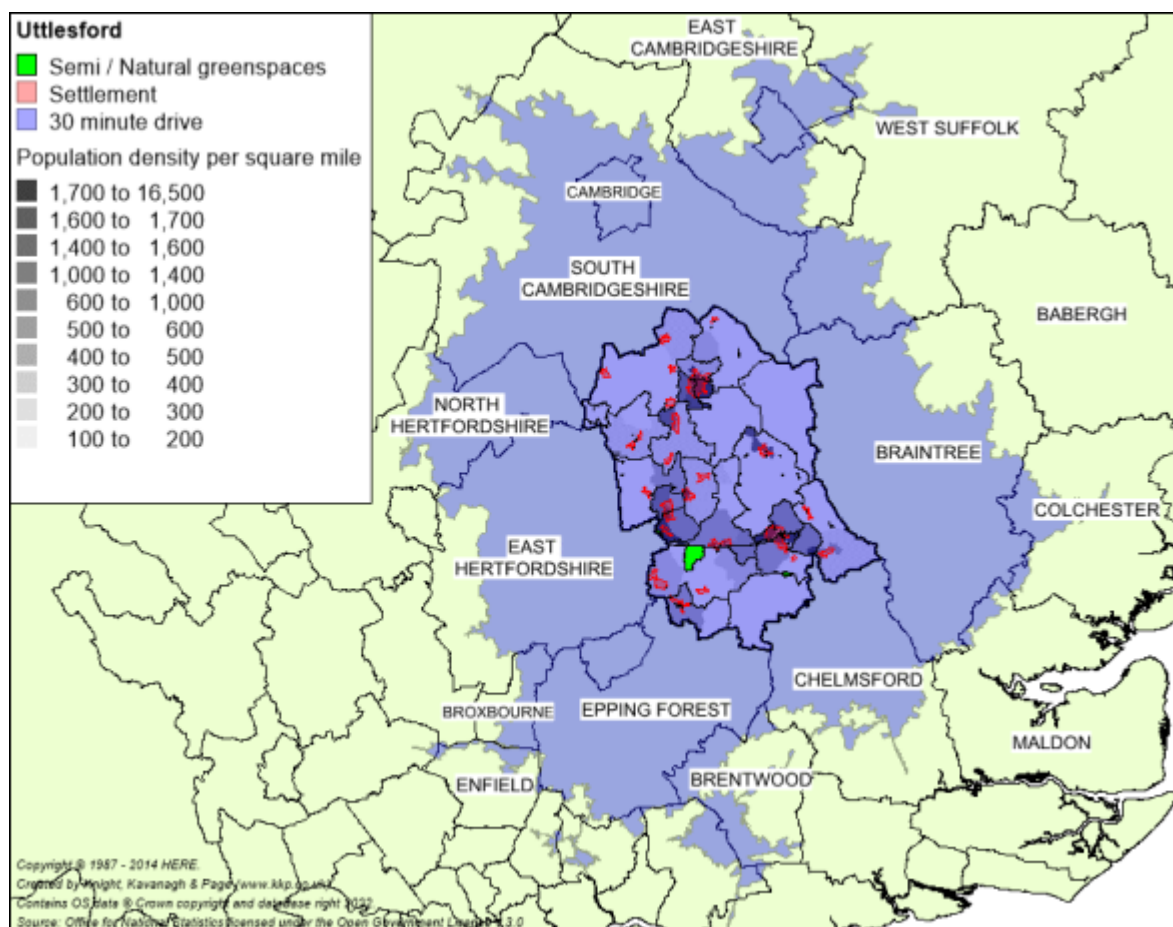


Figure 5.1: Natural and semi-natural greenspace mapped

# UTTLESFORD DISTRICT COUNCIL OPEN SPACE UPDATE

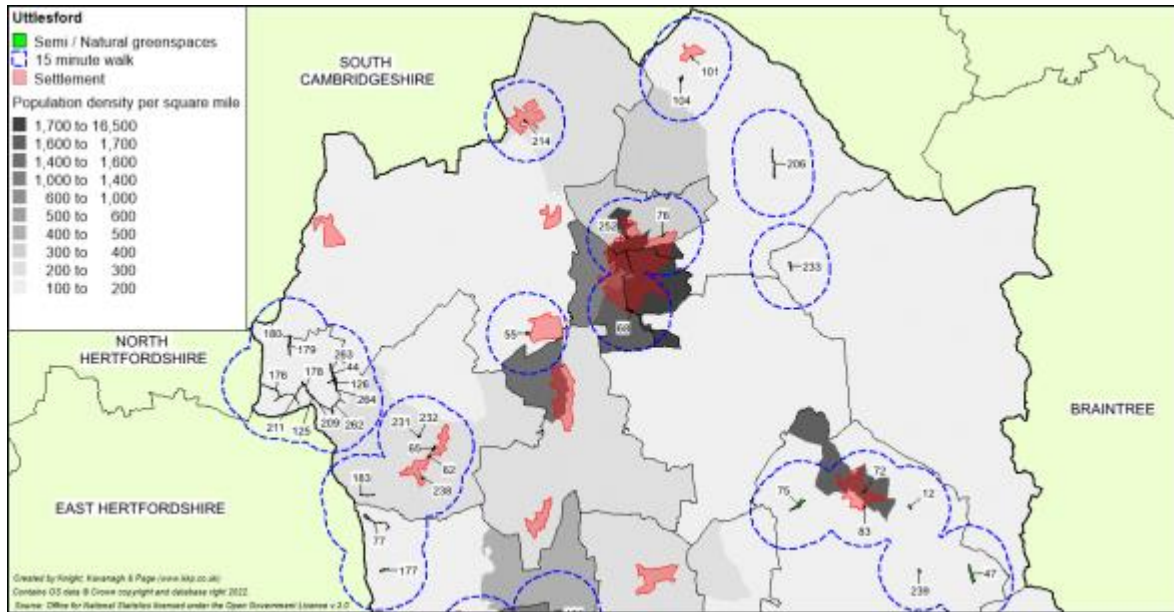


Figure 5.2: Natural and semi-natural greenspace mapped - North

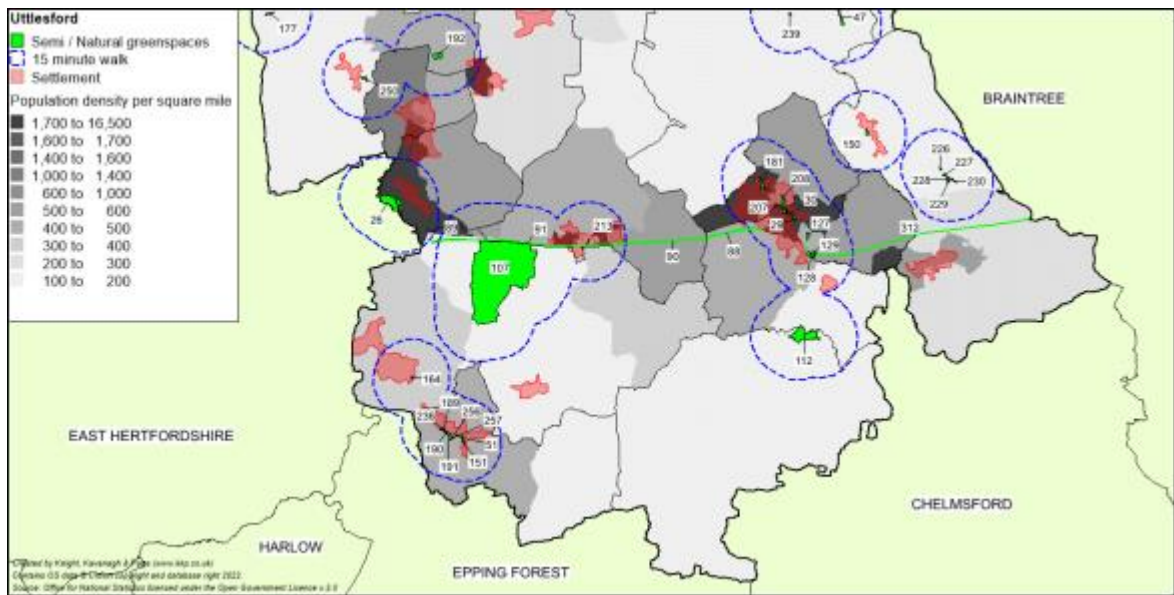


Figure 5.3: Natural and semi-natural greenspace mapped - South<sup>4</sup>

<sup>4</sup> No catchment is applied to Flich Way given its linear nature and role as a pathway

# UTTLESFORD DISTRICT COUNCIL

## OPEN SPACE UPDATE

Table 5.2: Key to sites mapped (sites with blank scores are inaccessible)

| ID  | Site name                             | Settlement/ Parish | Quality score | Value score |
|-----|---------------------------------------|--------------------|---------------|-------------|
| 12  | Bardfield Road                        | Thaxted            | 40.2%         | 24.5%       |
| 26  | Birchanger Wood                       | Birchanger         | 56.7%         | 36.4%       |
| 29  | Braintree Road                        | Great Dunmow       | 41.9%         | 25.5%       |
| 30  | Braintree Road/River Chelmer          | Great Dunmow       | 58.3%         | 26.4%       |
| 44  | Bull Lane, Langley Upper Green        | Langley            | 39.7%         | 25.5%       |
| 47  | Bustard Green                         | Lindsell           | 43.5%         | 34.5%       |
| 51  | Chelmsford Road                       | Hatfield Heath     | 43.1%         | 30.0%       |
| 55  | Chinnel Meadow                        | Wendens Ambo       | 31.5%         | 16.4%       |
| 62  | Clatterbury Lane 1                    | Clavering          | 37.0%         | 20.0%       |
| 65  | Clatterbury Lane woodland             | Clavering          | 42.9%         | 30.9%       |
| 68  | Claypits Plantation                   | Saffron Walden     | 44.6%         | 25.5%       |
| 72  | Coptal Lane                           | Thaxted            | 40.2%         | 25.5%       |
| 76  | De Vigier Avenue                      | Saffron Walden     | 34.2%         | 20.0%       |
| 77  | Dewes Green Road                      | Berden             | 24.5%         | 24.5%       |
| 83  | Dunmow Road, Thaxted                  | Thaxted            | 38.6%         | 25.5%       |
| 88  | Flitch Way, Dunmow                    | Great Dunmow       | 45.7%         | 30.9%       |
| 89  | Flitch Way, Great Hallingbury         | Great Hallingbury  | 53.3%         | 30.9%       |
| 90  | Flitch Way, Little Canfield           | Little Canfield    | 52.2%         | 30.9%       |
| 91  | Flitch Way, Takeley                   | Takeley            | 48.4%         | 25.5%       |
| 101 | Hadstock village pond                 | Hadstock           | 32.6%         | 25.5%       |
| 104 | Harrison Sayer (wildlife trust)       | Hadstock           | 33.7%         | 34.5%       |
| 107 | Hatfield Forest                       | Hatfield Broad Oak | 57.1%         | 45.5%       |
| 112 | High Easter Road/Bishop's Green       | High Easter        | 31.0%         | 24.5%       |
| 125 | Langley Lower Green                   | Langley            | 21.7%         | 20.0%       |
| 126 | Langley off Valance Road              | Langley            | 46.7%         | 30.0%       |
| 127 | Langleys Community woodland 1         | Great Dunmow       | 36.4%         | 25.5%       |
| 128 | Langleys Community woodland 2         | Great Dunmow       | 37.0%         | 19.1%       |
| 129 | Langleys Stand of Willows             | Great Dunmow       | 41.9%         | 25.5%       |
| 150 | Marshall Piece                        | Stebbing           | 22.3%         | 15.5%       |
| 151 | Matching Road                         | Hatfield Heath     | 48.9%         | 20.0%       |
| 164 | Motts Green                           | Little Hallingbury | 21.2%         | 10.0%       |
| 176 | Off Roper's Lane, Langley Lower Green | Langley            | 38.0%         | 24.5%       |
| 177 | Park Green Nature Reserve             | Berden             | 21.2%         | 20.0%       |
| 178 | Park Lane                             | Langley            | 32.6%         | 20.0%       |
| 179 | Park Lane 1, Chishall Common          | Langley            | 33.2%         | 29.1%       |
| 180 | Park Lane 2, Chishall Common          | Langley            | 26.1%         | 23.6%       |
| 181 | Parsonage Downs                       | Great Dunmow       | 60.9%         | 35.5%       |
| 183 | Pelham Road                           | Clavering          | 22.3%         | 10.0%       |

## UTTLESFORD DISTRICT COUNCIL OPEN SPACE UPDATE

| ID  | Site name                             | Settlement/ Parish | Quality score | Value score |
|-----|---------------------------------------|--------------------|---------------|-------------|
| 189 | Pond Lane 1                           | Hatfield Heath     | 46.7%         | 29.1%       |
| 190 | Pond Lane 2                           | Hatfield Heath     | 49.5%         | 24.5%       |
| 191 | Pond Lane 3                           | Hatfield Heath     | 51.1%         | 30.0%       |
| 192 | Pound Lane                            | Ugley              | 41.9%         | 30.0%       |
| 206 | River Bourne Wilderness nature trail  | Ashdon             | 40.8%         | 20.9%       |
| 207 | River Chelmer                         | Great Dunmow       | 40.2%         | 45.5%       |
| 208 | River Chelmer, Harp Mead              | Great Dunmow       | 45.7%         | 25.5%       |
| 209 | River Stort, Langley Lower Green      | Langley            |               |             |
| 211 | Roper's Lane, Langley Lower Green     | Langley            | 38.6%         | 24.5%       |
| 213 | Smiths Green                          | Takeley            | 42.9%         | 16.4%       |
| 214 | South Street                          | Great Chesterford  | 52.9%         | 40.0%       |
| 226 | Stebbing Green 1                      | Stebbing           |               |             |
| 227 | Stebbing Green 2                      | Stebbing           | 44.0%         | 25.5%       |
| 228 | Stebbing Green 3                      | Stebbing           | 43.5%         | 25.5%       |
| 229 | Stebbing Green 4                      | Stebbing           | 34.1%         | 30.0%       |
| 230 | Stebbing Green 5                      | Stebbing           | 33.2%         | 20.0%       |
| 231 | Stickling Green 1                     | Clavering          | 52.7%         | 25.5%       |
| 232 | Stickling Green 2                     | Clavering          | 46.2%         | 24.5%       |
| 233 | Stocking Green woodland               | Radwinter          | 17.9%         | 14.5%       |
| 236 | Stortford Road 2, Hatfield Heath      | Hatfield Heath     | 54.4%         | 25.5%       |
| 238 | Stortford Road, Clavering             | Clavering          | 28.3%         | 16.4%       |
| 239 | Sweetings Meadow                      | Lindsell           | 47.3%         | 34.5%       |
| 250 | The Downs, Manuden                    | Manuden            | 33.7%         | 7.3%        |
| 252 | The Green Little Walden Road          | Saffron Walden     | 51.6%         | 25.5%       |
| 256 | The Street pond                       | Hatfield Heath     | 57.6%         | 26.4%       |
| 257 | The Street, Hatfield Heath            | Hatfield Heath     | 60.9%         | 26.4%       |
| 262 | Upper Green/Roast Green               | Langley            | 37.0%         | 24.5%       |
| 263 | Valance Road 1, Langley               | Langley            | 45.7%         | 24.5%       |
| 264 | Valance Road 2, Langley               | Langley            | 44.6%         | 29.1%       |
| 312 | Fritch Way, Fritch Green <sup>5</sup> | Little Dunmow      |               |             |

### 5.4 Quality

To determine whether sites are high or low quality (as recommended by the Companion Guidance) scores from the site assessments are colour-coded against a baseline threshold (high being green and low being red). The table below summarises the results of the quality assessment for natural and semi-natural greenspace. A threshold of 35% is applied to identify high and low quality. Further explanation of how the quality scores are derived can be found in Part 2 (Methodology).

<sup>5</sup> Late inclusion to the study, site could not be sufficiently viewed so no score attributed

# UTTLESFORD DISTRICT COUNCIL

## OPEN SPACE UPDATE

Table 5.3: Quality ratings for natural and semi-natural greenspace in Uttlesford

| Scores (%)   |               |               | No. of sites |             |
|--------------|---------------|---------------|--------------|-------------|
| Lowest score | Average score | Highest score | Low (<35%)   | High (>35%) |
| 18%          | 41%           | 61%           | 19           | 46          |

Three sites do not receive a quality or value score. River Stort, Langley Lower Green and Stebbing Green 1 both appear inaccessible. Flitch Way, Flitch Green does not receive a score due to its late inclusion.

Natural and semi-natural greenspace has a lower quality threshold than some other open space typologies such as parks. This reflects the wide-ranging characteristics of provision. For instance, natural and semi-natural sites can be intentionally without ancillary facilities in order to reduce misuse/inappropriate behaviour whilst encouraging greater conservation.

Of assessed natural and semi-natural provision, a total of 19 sites (29%) in Uttlesford rate below the threshold set for quality. There are 46 rating above the quality threshold applied.

All sites scoring below the threshold for quality tend to be devoid of basic ancillary features such as benches and bins. However, as previously mentioned, this can be due to their purpose as a habitat and even some higher scoring sites lack such features. However, some sites are also noted as appearing poorly maintained with no pathways or evidence of use.

The lowest scoring sites are:

- ◀ Stocking Green woodland (18%)
- ◀ Park Green Nature Reserve (21%)
- ◀ Motts Green (21%)

The sites are all observed as isolated wooded areas with no ancillary facilities. Consequently, they rate lower for personal security, levels of use and general quality. Access to and within the sites is also uncertain.

Most sites scoring above the threshold are observed as being attractive due to the perceived higher levels of maintenance and cleanliness; often a reflection of their apparent regular use by people. Some of the highest scoring sites are:

- ◀ The Street, Hatfield Heath (61%)
- ◀ Parsonage Downs, Great Dunmow (61%)
- ◀ The Street Pond, Hatfield Heath (58%)
- ◀ Braintree Road/River Chelmer, Great Dunmow (58%)

The sites are viewed as well maintained, with good pathways, seating and often with a dedicated/obvious walking trail. In addition, they are all located within a settlement which further strengthens their role and use to the local community.

# UTTLESFORD DISTRICT COUNCIL

## OPEN SPACE UPDATE

### 5.5 Value

To determine whether sites are high or low value (as recommended by the Companion Guidance) scores from site assessments have been colour-coded against a baseline threshold (high being green and low being red). The table below summarises the results of the value assessment for natural and semi-natural greenspace. A threshold of 20% is applied to identify high and low value. Further explanation of how the value scores are derived can be found in Part 2 (Methodology).

*Table 5.4: Value scores for natural and semi-natural greenspace in Uttlesford*

| Scores (%)   |               |               | No. of sites |             |
|--------------|---------------|---------------|--------------|-------------|
| Lowest score | Average score | Highest score | Low (<20%)   | High (>20%) |
| 7%           | 26%           | 45%           | 9            | 56          |

Of the natural and semi-natural greenspace sites assessed, 56 sites (86%) rate above the threshold for value.

The highest scoring sites for value are:

- ◀ River Chelmer (46%)
- ◀ Hatfield Forest (46%)
- ◀ South Street (40%)

Each site scores highly for ecological value as they provide a variety of habitats. All are observed as generally attractive forms of provision. Hatfield Forest, owned by The National Trust also has a café on site which adds to its economic value. The National Trust site is widely recognised as a popular attraction. Consultation with town/parish councils and through the community survey highlights it to be overused, under pressure and at capacity.

The River Chelmer, Great Dunmow is recognised as a site offering a wide range of uses and opportunities. It provides some ecological value (i.e., Mead Harp Jubilee Woodland) as well as amenity benefits via the extensive and good quality pathways.

There is understood to be plans for a country park within the district as part of future housing plans. This could help alleviate some of the pressures at significant sites such as those highlighted at Hatfield Forest. The creation of a country park could also contribute in a multifunctional role to the levels of park provision.

The Street Pond and The Street Hatfield Heath (26%) have dedicated wildlife areas maintained by Hatfield Heath Parish Council. The sites are identified by the Parish Council as popular for informal walking.

The high proportion of sites to rate above the threshold for value demonstrates the added benefit natural and semi-natural greenspaces can provide especially in terms of contributing to flora and fauna promotion. Sites are recognised as providing habitat opportunities whilst also offering opportunities for informal recreational activities. Prominent sites of this type can even act as destination sites, attracting users from other areas of Uttlesford.

### 5.6 Summary

#### **Natural and semi-natural greenspace summary**

- ◀ In total, there are 68 natural and semi-natural greenspace sites covering 509 hectares. This equates to 5.58 hectares per 1,000 population.
- ◀ Hatfield Forest accounts for 75% of total provision. The site is highlighted as suffering from the impacts of recreational use. There is also an entry charge. If omitted to better demonstrate the need for natural greenspace, a figure of 1.39 hectares per 1,000 population is noted.
- ◀ Of natural and semi-natural sites assessed, a total of 46 sites (71%) rate above the threshold set for quality. There are 19 sites that rate below the quality threshold applied.
- ◀ The majority of sites rate above the threshold for value. This demonstrates the added benefit natural and semi-natural greenspaces can provide, especially in terms of contributing to flora and fauna whilst also providing recreational opportunities.

# UTTLESFORD DISTRICT COUNCIL

## OPEN SPACE UPDATE

---

### PART 6: AMENITY GREENSPACE

#### 6.1 Introduction

This is defined as sites offering opportunities for informal activities close to home or work or enhancement of the appearance of residential or other areas. It includes informal recreation spaces, housing green spaces, village greens and other incidental spaces.

#### 6.2 Current provision

There are 119 amenity greenspace sites in Uttlesford, an increase of 9 sites since 2019, equivalent to 147 hectares of provision, an increase of 7ha. Sites are most often found within areas of housing and function as informal recreation space or open space along highways providing visual amenity. A number of recreational grounds and playing fields are also classified as amenity greenspace.

*Table 6.1: Distribution of amenity greenspace*

| Analysis area         | Number of sites | Total hectares (ha) | Current provision (ha per 1,000 population) |
|-----------------------|-----------------|---------------------|---|
| Saffron Walden        | 13              | 14.38               | 0.96  |
| Great Dunmow          | 11              | 13.67               | 1.28  |
| Rural Area            | 84              | 111.99              | 1.95  |
| Stansted Mountfitchet | 11              | 6.65                | 0.81  |
| <b>Uttlesford</b>     | <b>119</b>      | <b>146.69</b>       | <b>1.60</b>                                 |

It is important to note that whilst a large proportion of provision may be considered as being smaller grassed areas or roadside verges, there is some variation of sites within this typology. For example, small sites such as Chapel Fields 0.09 hectares, to the largest, Woodside Green at over 26 hectares. Larger recreation grounds and playing fields serve a different purpose to smaller grassed areas and verges. These often provide an extended range of opportunities for recreational and sporting activities due to their size.

Fields In Trust (FIT) suggests a guideline quantity standard of 0.60 hectares per 1,000 population. Table 6.1 shows that overall, Uttlesford is above this suggested standard.

#### 6.3 Accessibility

Figures 6.1, 6.2 and 6.3 show amenity greenspace mapped against a 15-minute walk time. This is based on the catchments used in the 2019 study.

Mapping shows that generally most settlements contain amenity greenspace. However, there are some smaller rural settlements which do not have access to provision; most noticeably Chrishall.

# UTTLESFORD DISTRICT COUNCIL OPEN SPACE UPDATE

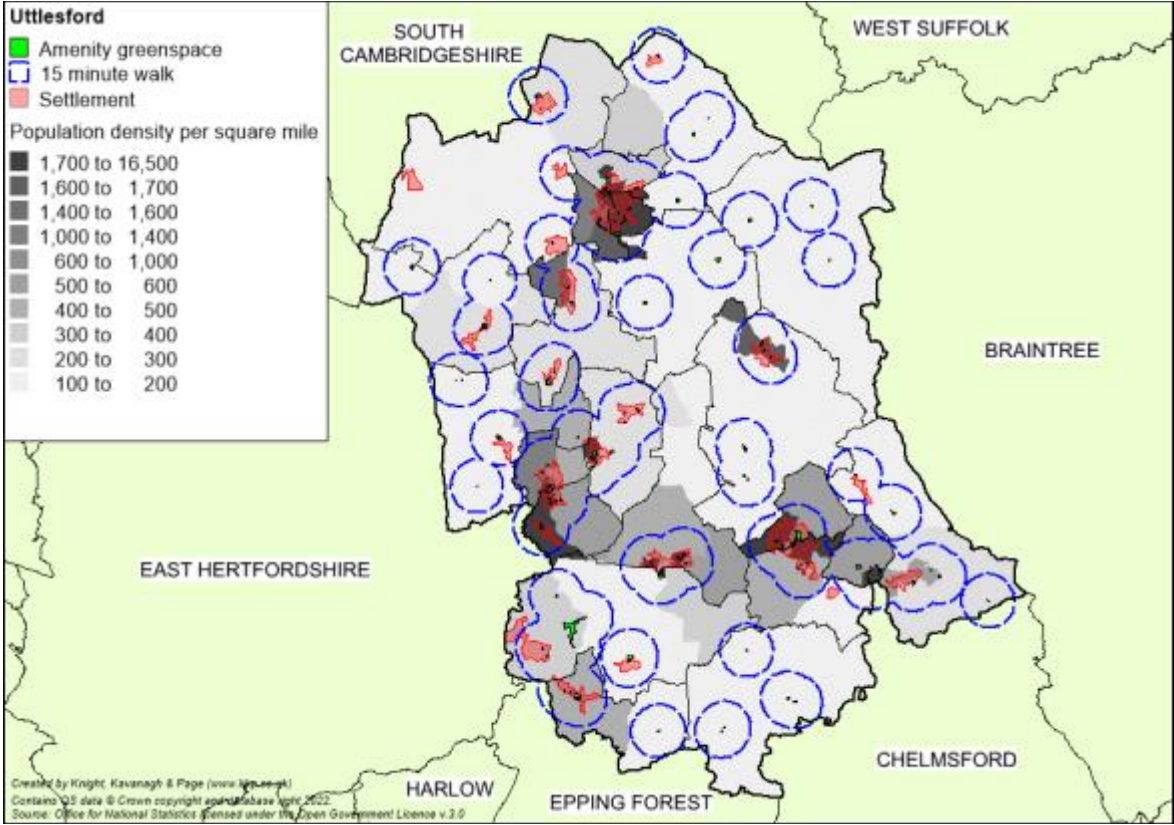


Figure 6.1: Amenity greenspace mapped

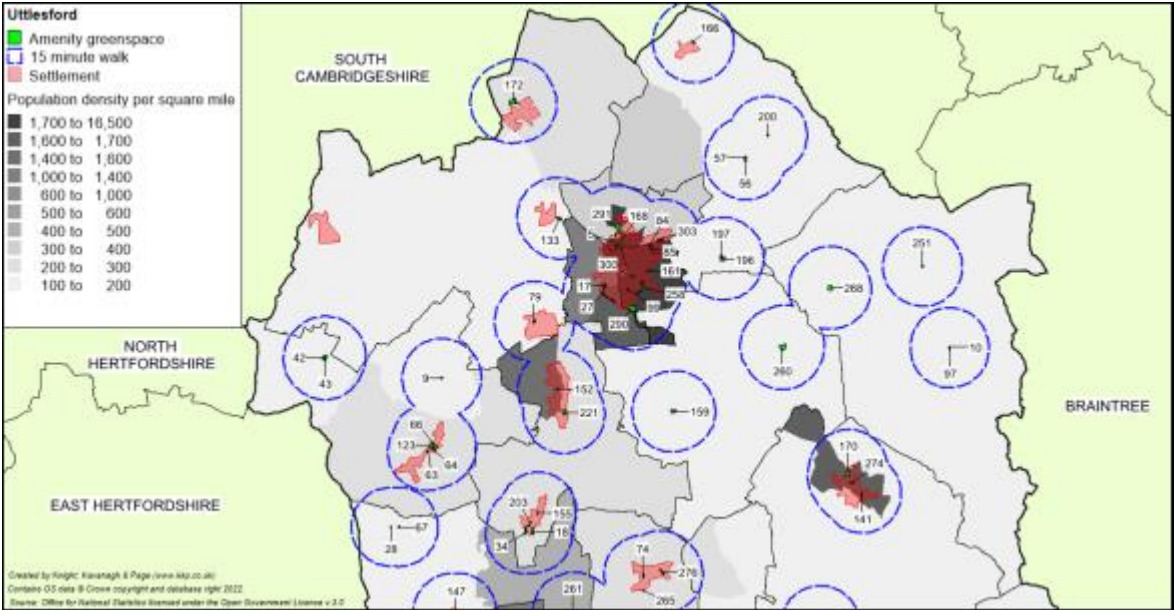


Figure 6.2: Amenity greenspace mapped - North

# UTTLESFORD DISTRICT COUNCIL OPEN SPACE UPDATE

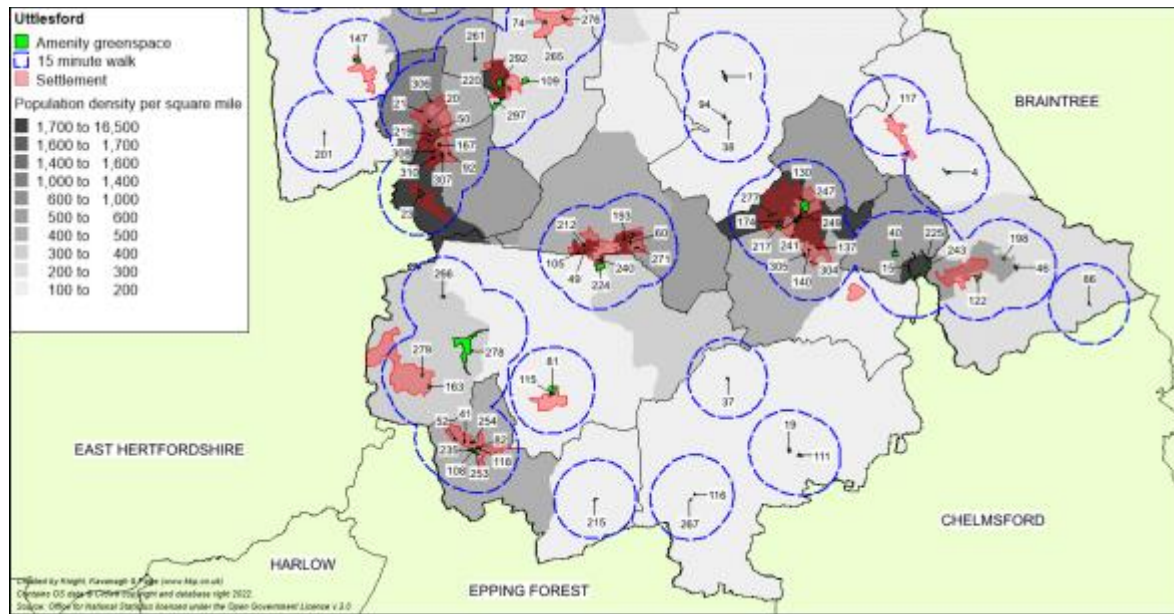


Figure 6.3: Amenity greenspace mapped - South

Table 6.2: Key to sites mapped

| ID | Site name                             | Settlement/ Parish    | Quality score | Value score |
|----|---------------------------------------|-----------------------|---------------|-------------|
| 1  | Abbey View                            | Great Easton          | 41.6%         | 28.0%       |
| 4  | Allcotts Playing field                | Stebbing              | 35.0%         | 32.0%       |
| 5  | Anglo American Playing Fields         | Saffron Walden        | 80.4%         | 35.0%       |
| 9  | Arkesden Recreation ground            | Arkesden              | 68.7%         | 29.0%       |
| 10 | Baptist Church Field, Great Sampford  | Great Sampford        | 30.8%         | 22.0%       |
| 15 | Baynard Avenue                        | Flitch Green          | 50.5%         | 38.0%       |
| 17 | Beeches Close                         | Saffron Walden        | 45.3%         | 22.0%       |
| 18 | Belchams Lane                         | Quendon and Rickling  | 40.7%         | 33.0%       |
| 19 | Bellhouse Villas                      | High Easter           | 41.1%         | 29.0%       |
| 20 | Bentfield Gardens public open space   | Stansted Mountfitchet | 51.9%         | 33.0%       |
| 21 | Bentfield Green                       | Stansted Mountfitchet | 50.0%         | 28.0%       |
| 23 | Birchanger Lane                       | Birchanger            | 78.5%         | 39.0%       |
| 27 | Blacklands Avenue / Seven Devils Lane | Saffron Walden        | 80.8%         | 28.0%       |
| 28 | Bonneting Lane                        | Berden                | 50.5%         | 33.0%       |
| 34 | Brixton Lane                          | Quendon and Rickling  | 50.0%         | 28.0%       |
| 37 | Broadfield Playing field              | High Roding           | 53.7%         | 33.0%       |
| 38 | Brocks Mead                           | Great Easton          | 46.3%         | 28.0%       |
| 40 | Brook Street Recreation Ground        | Little Dunmow         | 45.8%         | 38.0%       |
| 41 | Broomfields                           | Hatfield Heath        | 49.1%         | 28.0%       |
| 42 | Bull Lane cricket field               | Langley               | 60.7%         | 28.0%       |
| 43 | Bull Lane village green               | Langley               | 55.6%         | 23.0%       |

# UTTLESFORD DISTRICT COUNCIL

## OPEN SPACE UPDATE

| ID  | Site name                           | Settlement/ Parish    | Quality score | Value score |
|-----|-------------------------------------|-----------------------|---------------|-------------|
| 46  | Burnstie Road, Bannister Green      | Felsted               | 69.6%         | 34.0%       |
| 49  | Chapel Fields                       | Takeley               | 38.8%         | 22.0%       |
| 50  | Chapel Hill War memorial            | Stansted Mountfitchet | 77.1%         | 34.0%       |
| 52  | Chestnut Drive                      | Hatfield Heath        | 69.2%         | 44.0%       |
| 56  | Church End playing field            | Ashdon                | 36.9%         | 27.0%       |
| 57  | Church Field                        | Ashdon                | 34.6%         | 33.0%       |
| 60  | Clarendon Road, Priors Green        | Little Canfield       | 56.5%         | 28.0%       |
| 63  | Clatterbury Lane 2                  | Clavering             | 55.6%         | 21.0%       |
| 64  | Clatterbury Lane 3                  | Clavering             | 62.6%         | 28.0%       |
| 66  | Clatterbury Lane/Hill Green         | Clavering             | 57.0%         | 38.0%       |
| 67  | Clavering Road Village Hall         | Berden                | 44.4%         | 33.0%       |
| 74  | Crow Street                         | Henham                | 68.7%         | 44.0%       |
| 79  | Duck Street                         | Wendens Ambo          | 43.0%         | 28.0%       |
| 81  | Dunmow Road recreation ground       | Hatfield Broad Oak    | 43.0%         | 29.0%       |
| 82  | Dunmow Road, Hatfield Heath         | Hatfield Heath        | 36.4%         | 29.0%       |
| 84  | Elizabeth Way 1                     | Saffron Walden        | 34.6%         | 16.0%       |
| 85  | Elizabeth Way 2                     | Saffron Walden        | 50.5%         | 27.0%       |
| 86  | Evelyn Road, Willows Green          | Felsted               | 62.1%         | 27.0%       |
| 92  | Foresthall Park                     | Stansted Mountfitchet | 49.1%         | 28.0%       |
| 94  | Great Easton Playing Field          | Great Easton          | 46.3%         | 28.0%       |
| 97  | Great Sampford Recreation ground    | Great Sampford        | 75.7%         | 40.0%       |
| 99  | Greenways                           | Saffron Walden        | 34.6%         | 23.0%       |
| 105 | Harvest Fields                      | Takeley               | 72.0%         | 28.0%       |
| 108 | Hatfield Heath War Memorial         | Hatfield Heath        | 48.6%         | 38.0%       |
| 109 | Henham Road Cricket Club            | Elsenham              | 22.9%         | 23.0%       |
| 111 | High Easter playing fields          | High Easter           | 62.6%         | 34.0%       |
| 115 | High Street Village green           | Hatfield Broad Oak    | 79.0%         | 60.0%       |
| 116 | Holloway Crescent                   | Leaden Roding         | 43.9%         | 28.0%       |
| 117 | Hornsea Villas playing field        | Stebbing              | 44.4%         | 34.0%       |
| 118 | Hunter Meet/ Chelmsford Road        | Hatfield Heath        | 48.1%         | 23.0%       |
| 122 | Jollys Boy Lane North Playing Field | Felsted               | 57.9%         | 29.0%       |
| 123 | Jubilee Field, Claterbury Lane      | Clavering             | 43.5%         | 39.0%       |
| 130 | Lime Tree Hill                      | Great Dunmow          | 32.2%         | 22.0%       |
| 133 | Littlebury Recreation Ground        | Littlebury            | 59.3%         | 39.0%       |
| 137 | Lower Mill Field                    | Great Dunmow          | 50.5%         | 27.0%       |
| 140 | Lukins Mead/Nusery Rise             | Great Dunmow          | 36.4%         | 23.0%       |
| 141 | Magdalen Green                      | Thaxted               | 48.6%         | 22.0%       |
| 147 | Manuden playing fields              | Manuden               | 56.1%         | 33.0%       |
| 152 | Meadow Ford                         | Newport               | 52.3%         | 23.0%       |

## UTTLESFORD DISTRICT COUNCIL OPEN SPACE UPDATE

| ID  | Site name                        | Settlement/ Parish    | Quality score | Value score |
|-----|----------------------------------|-----------------------|---------------|-------------|
| 155 | Memorial area                    | Quendon and Rickling  | 66.8%         | 43.0%       |
| 159 | Mill Road Recreation ground      | Debden                | 79.9%         | 40.0%       |
| 161 | Monk's Hill                      | Saffron Walden        | 52.3%         | 28.0%       |
| 163 | Motts Green AGS                  | Little Hallingbury    | 39.3%         | 38.0%       |
| 166 | Moules Lane recreation ground    | Hadstock              | 49.5%         | 23.0%       |
| 167 | Mountfitchet Road                | Stansted Mountfitchet | 80.8%         | 35.0%       |
| 168 | Museum Street                    | Saffron Walden        | 68.7%         | 48.0%       |
| 170 | Newbiggen Street playing field   | Thaxted               | 65.4%         | 33.0%       |
| 172 | Newmarket Road Playing field     | Great Chesterford     | 70.1%         | 33.0%       |
| 174 | Newton Green                     | Great Dunmow          | 61.7%         | 28.0%       |
| 193 | Priors Green                     | Takeley               | 35.5%         | 23.0%       |
| 196 | Radwinter Road playing field     | Sewards End           | 76.6%         | 29.0%       |
| 197 | Radwinter Road Village Hall      | Sewards End           | 46.3%         | 22.0%       |
| 198 | Ravens Crescent                  | Felsted               | 73.8%         | 28.0%       |
| 200 | Rectory Lane playing field       | Ashdon                | 66.4%         | 38.0%       |
| 201 | Rectory Road                     | Farnham               | 47.2%         | 39.0%       |
| 203 | Rickling Green Road AGS          | Quendon and Rickling  | 50.9%         | 35.0%       |
| 212 | Silver Jubilee Hall, Takeley     | Takeley               | 44.4%         | 28.0%       |
| 215 | St Martin's Close                | White Roding          | 52.3%         | 27.0%       |
| 217 | Stane Street                     | Great Dunmow          | 67.8%         | 39.0%       |
| 219 | Stanstead Park recreation ground | Stansted Mountfitchet | 59.8%         | 34.0%       |
| 220 | Stansted Road                    | Elsenham              | 62.6%         | 38.0%       |
| 221 | Station Road Common, Newport     | Newport               | 42.5%         | 29.0%       |
| 224 | Station Road Recreation ground   | Takeley               | 64.5%         | 40.0%       |
| 225 | Station Road, Flitch Green       | Flitch Green          | 66.8%         | 28.0%       |
| 235 | Stortford Road 1, Hatfield Heath | Hatfield Heath        | 77.6%         | 29.0%       |
| 240 | Takeley Park                     | Takeley               | 46.3%         | 28.0%       |
| 241 | Teybards Lay                     | Great Dunmow          | 65.4%         | 39.0%       |
| 243 | Tanton Road Lake                 | Flitch Green          | 83.6%         | 44.0%       |
| 247 | The Causeway Recreation ground   | Great Dunmow          | 64.5%         | 55.0%       |
| 249 | The Downs, Great Dunmow          | Great Dunmow          | 68.2%         | 50.0%       |
| 251 | The Glebe AGS                    | Hempstead             | 44.9%         | 27.0%       |
| 253 | The Heath Cricket pitch          | Hatfield Heath        | 67.8%         | 33.0%       |
| 254 | The Shaw                         | Hatfield Heath        | 53.3%         | 29.0%       |
| 258 | Tukes Way AGS                    | Saffron Walden        | 50.9%         | 29.0%       |
| 260 | Tye Green, Wimbish               | Wimbish               | 63.6%         | 35.0%       |
| 261 | Ugley Green                      | Ugley                 | 65.0%         | 28.0%       |
| 265 | Vernons Close playing field      | Henham                | 37.4%         | 28.0%       |
| 266 | Village Hall, Great Hallingbury  | Great Hallingbury     | 35.5%         | 32.0%       |

# UTTLESFORD DISTRICT COUNCIL OPEN SPACE UPDATE

| ID  | Site name                     | Settlement/ Parish    | Quality score | Value score |
|-----|-------------------------------|-----------------------|---------------|-------------|
| 267 | Village Hall, Leaden Roding   | Leaden Roding         | 49.1%         | 22.0%       |
| 268 | Walden Road Recreation Ground | Radwinter             | 53.7%         | 34.0%       |
| 271 | Warwick Road, Priors Green    | Little Canfield       | 54.2%         | 28.0%       |
| 274 | Weaverhead Close              | Thaxted               | 36.4%         | 28.0%       |
| 276 | Woodend Green                 | Henham                | 59.3%         | 35.0%       |
| 277 | Woodlands Walk                | Great Dunmow          | 65.0%         | 29.0%       |
| 278 | Woodside Green                | Great Hallingbury     | 29.9%         | 43.0%       |
| 279 | Wrights Green                 | Little Hallingbury    | 53.3%         | 27.0%       |
| 290 | Herbert's Farm Playing Fields | Saffron Walden        | 60.3%         | 29.0%       |
| 291 | Lime Avenue                   | Saffron Walden        | 40.2%         | 28.0%       |
| 292 | Elsenham PC Recreation Ground | Elsenham              | 77.6%         | 35.0%       |
| 297 | Franklin Drive                | Elsenham              | 70.1%         | 44.0%       |
| 300 | Allard Way                    | Saffron Walden        | 71.0%         | 35.0%       |
| 303 | Miller Street                 | Saffron Walden        | 65.9%         | 29.0%       |
| 304 | Hibbert Drive                 | Great Dunmow          | 71.5%         | 34.0%       |
| 305 | Hedgerow Grove                | Great Dunmow          | 62.1%         | 34.0%       |
| 306 | Oxlip Road                    | Stansted Mountfitchet | 63.6%         | 29.0%       |
| 307 | Herrington Avenue             | Stansted Mountfitchet | 71.0%         | 29.0%       |
| 308 | Wilkin Crescent               | Stansted Mountfitchet | 54.7%         | 33.0%       |
| 310 | Reeve Road                    | Stansted Mountfitchet | 41.5%         | 28.0%       |

## 6.4 Quality

To determine whether sites are high or low quality (as recommended by the Companion Guidance); the scores from site assessments have been colour-coded against a baseline threshold (high being green and low being red). The table below summarises the results of the quality assessment for amenity greenspaces. A threshold of 45% is applied to identify high and low quality. Further explanation of how the quality scores and thresholds are derived can be found in Part 2 (Methodology).

Table 6.3: Quality ratings for amenity greenspace in Uttlesford

| Scores (%)   |               |               | No. of sites |             |
|--------------|---------------|---------------|--------------|-------------|
| Lowest score | Average score | Highest score | Low (<45%)   | High (>45%) |
| 24%          | 56%           | 84%           | 26           | 93          |

A total of 78% of assessed amenity greenspace sites in Uttlesford rate above the threshold for quality. The highest scoring sites for quality are:

- ↓ Tanton Road Lake (84%)
- ↓ Mountfitchet Road (81%)
- ↓ Blacklands Avenue and Seven Devils Lane (81%)
- ↓ Anglo American Playing Fields (80%)

# UTTLESFORD DISTRICT COUNCIL

## OPEN SPACE UPDATE

The four sites are observed as having good levels of maintenance and cleanliness, resulting in a positive overall appearance. In addition, they provide user security as well as recreational opportunities. The sites all have bins to prevent excessive littering as well as seating. These add to the quality and use of the sites. In addition, Anglo American Playing Fields and Mountfitchet Road contain play provision with the latter also featuring a MUGA.

High Easter Playing Fields (62%) scores above the quality threshold. High Easter Parish Council highlights that there are issues with the playing field surface due to poor drainage. This affects quality of play, particularly hindering football, which suffers as a result.

Sites scoring below the threshold are generally smaller in size and are observed as being basic pockets of green space. However, despite having little recreational use and fewer ancillary facilities, it is important to recognise they may provide a visual amenity. The lowest scoring amenity greenspace sites in Uttlesford are:

- ↳ Henham Road Cricket Club (24%)
- ↳ Baptist Church Field, Great Sampford (32%)
- ↳ Elisabeth Way (35%)

These sites lack ancillary features and formal pathways. They also score lower for entrances and personal security. Henham Road Cricket Club appears to be a disused cricket ground.

Some Parish Councils highlight a lack of amenity greenspace in their area. For example, Thaxted Parish Council cite there is not enough greenspace and they aim to extend the amount of amenity provision wherever possible. Similarly, Stansted Mountfitchet Parish Council consider there to be a need for more open space provision in the settlement.

It is important to recognise that despite some sites rating below the threshold for quality, they may still have the potential to be important to the community. For instance, if a site is the only form of open space locally it may be of higher value given it is the only provision of its type. It may also provide a visual function. Such sites can have a wider contribution to local areas, in relation to community viability, quality of life and health and wellbeing.

### 6.5 Value

To determine whether sites are high or low value (as recommended by the Companion Guidance) site assessments scores are colour-coded against a baseline threshold (high being green and low being red). The table below summarises the results. A threshold of 20% is applied to identify high and low value. Further explanation of the value scoring and thresholds can be found in Part 2 (Methodology).

*Table 6.4: Value ratings for amenity greenspace in Uttlesford*

| Scores (%)   |               |               | No. of sites |             |
|--------------|---------------|---------------|--------------|-------------|
| Lowest score | Average score | Highest score | Low (<20%)   | High (>20%) |
| 16%          | 32%           | 60%           | 1            | 118         |

All except one amenity greenspace rate above the threshold for value. Elisabeth Way rates below the value threshold. The site serves more as a visual amenity and scores low for usage due to being overgrown with no facilities. Should a site be less attractive, or provide less recreational opportunity, people are less likely to visit the site.

# UTTLESFORD DISTRICT COUNCIL

## OPEN SPACE UPDATE

---

Some of the highest scoring sites for value in Uttlesford are:

- ◀ High Street village green (60%)
- ◀ The Causeway recreation ground (55%)
- ◀ The Downs, Great Dunmow (50%)

High Street village green (60%) scores the highest for value. It is an attractive greenspace, containing a pond and meeting the needs of several users. The Causeway recreation ground has a fitness trail, further adding to its amenity and health value. Each is observed as a good or excellent local amenity, attractive and well used.

Hatfield Heath War Memorial (38%) has a war memorial, adding cultural heritage value. Moreover, consultation with Hatfield Heath Parish Council highlights that festivals and car shows are hosted here. It is consequently highlighted as an important site for the village.

Numerous amenity sites have the additional benefit of sporting opportunities. The following are examples of sites to have either football goals or cricket squares:

- ◀ High Easter playing fields
- ◀ Dunmow Road recreation ground
- ◀ Belchams Lane
- ◀ Bellhouse Villas
- ◀ Hornsea Villas playing field
- ◀ Littlebury recreation ground
- ◀ Stansted Park recreation ground
- ◀ Birchanger Lane
- ◀ Rectory Lane playing field
- ◀ Arkesden recreation ground

Amenity greenspace should be recognised for its multi-purpose function, offering opportunities for a variety of leisure and recreational activities. It can often accommodate informal activities, such as casual play and dog walking. Some sites in Uttlesford offer a dual function and are amenity resources for residents as well as being visually pleasing. These attributes add to the quality, accessibility and aesthetics of amenity greenspace. Combined with the presence of facilities (e.g., seating, landscaping and trees) this means that the better-quality sites are likely to be more respected and valued by the local community.

### 6.6 Summary

#### **Amenity greenspace summary**

- ◀ There are 119 amenity greenspace sites in Uttlesford: over 146 hectares of provision.
- ◀ Over three quarters (78%) of amenity greenspace sites in Uttlesford rate above the threshold for quality. Several of the low scoring sites are marginally below the threshold.
- ◀ The majority of sites scoring below the threshold are smaller sites and are observed as being basic, small pockets of green space and lack ancillary features.
- ◀ In addition to its multifunctional role, amenity greenspace makes a valuable contribution to visual aesthetics for communities – hence nearly all sites rate above the value threshold.
- ◀ Only one site rates low for quality and value. This is due to quality impacting on value. A less attractive site provides less recreational opportunity, with people less likely to visit the site.

# UTTLESFORD DISTRICT COUNCIL

## OPEN SPACE UPDATE

---

### PART 7: PROVISION FOR CHILDREN AND YOUNG PEOPLE

#### 7.1 Introduction

This includes areas designated primarily for play and social interaction involving children and young people, such as equipped play areas, ball courts, skateboard areas and teenage shelters.

Provision for children is deemed to be sites consisting of formal equipped play facilities typically associated with play areas. This is usually perceived to be for children under 12 years of age. Provision for young people can include equipped sites that provide more robust equipment catering to older age ranges incorporating facilities such as skate parks, BMX, basketball courts, youth shelters and MUGAs.

#### 7.2 Current provision

A total of 88 sites in Uttlesford are identified as provision for children and young people. This combines to create a total of nearly 10 hectares. This is an increase of 15 sites, an increase of 1ha since 2019. No site size threshold has been applied and as such all known provision is identified and included within the audit.

*Table 7.1: Distribution of provision for children and young people*

| Analysis area         | Number of sites | Total hectares (ha) | Current provision (ha per 1,000 population) |
|-----------------------|-----------------|---------------------|---|
| Saffron Walden        | 9               | 1.67                | 0.11  |
| Great Dunmow          | 9               | 0.77                | 0.07  |
| Rural Area            | 57              | 6.47                | 0.11  |
| Stansted Mountfitchet | 13              | 0.79                | 0.10  |
| <b>Uttlesford</b>     | <b>88</b>       | <b>9.69</b>         | <b>0.11</b>                                 |

Fields In Trust (FIT) suggests 0.25 hectares per 1,000 population as a guideline quantity standard. Overall, Uttlesford has a current provision level of 0.11 hectares per 1,000 population.

A frequent comment within the responses to the community survey is the concern from respondents about a lack of play equipment catering for older children.

#### 7.3 Accessibility

Figures 7.1, 7.2 and 7.3 show the location of provision for children and young people across Uttlesford with a 10-minute walk time catchment applied, as well as a 15-minute walk time catchment applied for those sites with skate parks or BMX tracks. This is based on the catchments used in the 2019 study.

The mapping highlights that nearly all settlements across the district have access to at least one form of play area. The exceptions are Little Hallingbury and Rickling Green.

The greatest amounts of provision can be seen in the areas of highest population density (Saffron Walden, Dunmow, Birchanger and Stansted Mountfitchet).

# UTTLESFORD DISTRICT COUNCIL OPEN SPACE UPDATE

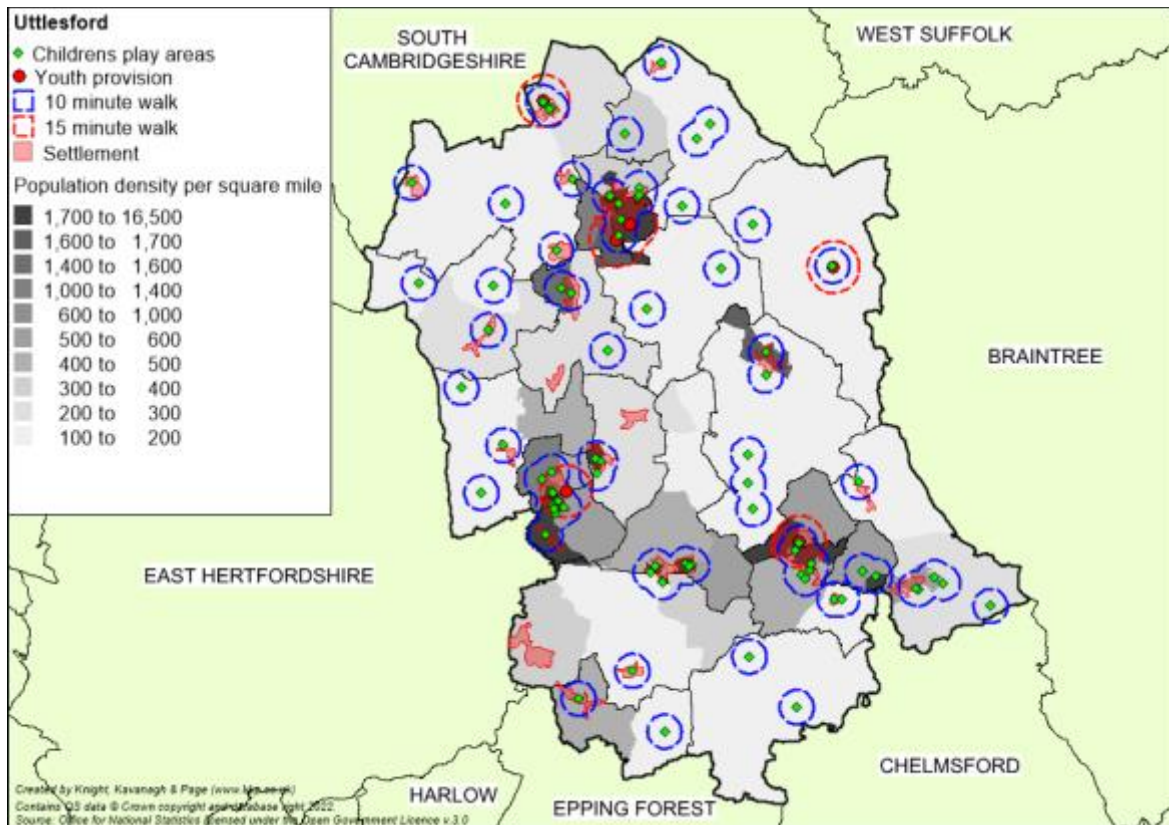


Figure 7.1: Provision for children and young people mapped

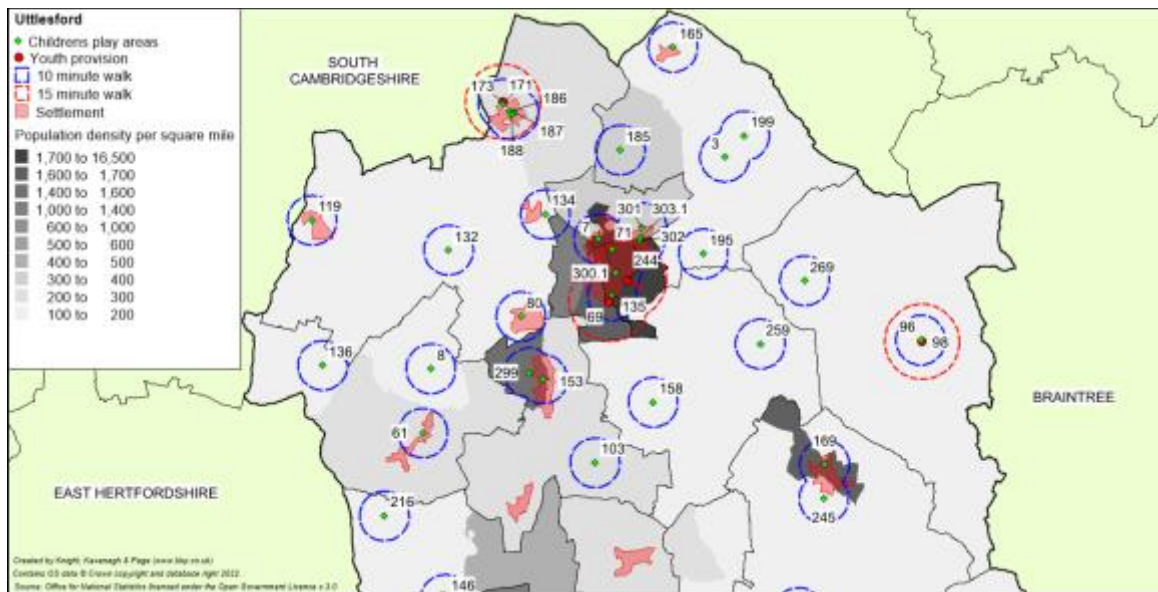


Figure 7.2: Provision for children and young people mapped – North

# UTTLESFORD DISTRICT COUNCIL OPEN SPACE UPDATE

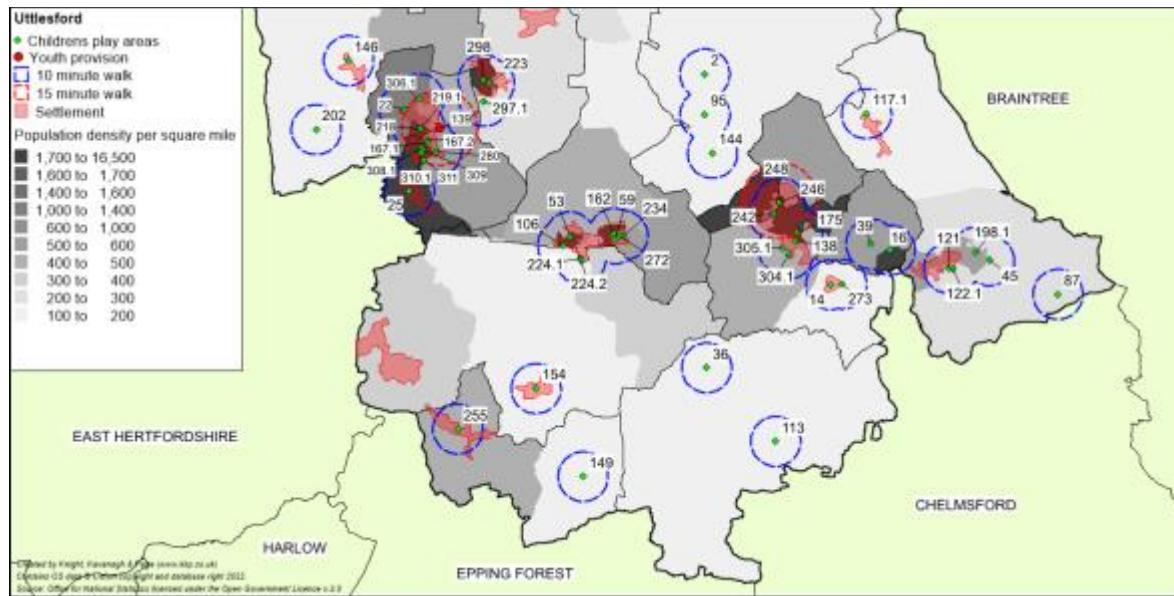


Figure 7.3: Provision for children and young people mapped – South

Table 7.2: Key to sites mapped

| ID  | Site name                               | Settlement/ Parish area | Quality score | Value score |
|-----|---|-------------------------|---------------|-------------|
| 2   | Abbey View play area                    | Great Easton            | 46.4%         | 45.5%       |
| 3   | All Saints Close play area              | Ashdon                  | 66.3%         | 38.2%       |
| 7   | Anglo American Playing Fields play area | Saffron Walden          | 48.5%         | 54.5%       |
| 8   | Arkesden play area                      | Arkesden                | 46.0%         | 38.2%       |
| 14  | Barnston Village Hall play area         | Barnston                | 45.0%         | 41.8%       |
| 16  | Baynard Avenue play area                | Flitch Green            | 61.9%         | 20.0%       |
| 22  | Bentfield Green play area               | Stansted Mountfitchet   | 45.7%         | 41.8%       |
| 25  | Birchanger Lane recreation ground       | Birchanger              | 52.2%         | 50.9%       |
| 36  | Broadfield play area                    | High Roding             | 70.1%         | 41.8%       |
| 39  | Brook Street play area                  | Little Dunmow           | 44.0%         | 41.8%       |
| 45  | Burnsite Road play area                 | Felsted                 | 49.5%         | 38.2%       |
| 53  | Chestnut Way play area                  | Takeley                 | 47.4%         | 41.8%       |
| 59  | Clarendon Road play areas               | Little Canfield         | 60.8%         | 54.5%       |
| 61  | Claterbury Lane play area               | Clavering               | 47.4%         | 41.8%       |
| 69  | Claypits Plantation BMX                 | Saffron Walden          | 29.9%         | 38.2%       |
| 71  | Common play area                        | Saffron Walden          | 62.9%         | 54.5%       |
| 80  | Duck Street play area                   | Wendens Ambo            | 46.4%         | 41.8%       |
| 87  | Evelyn Road, Willows Green play area    | Felsted                 | 47.4%         | 34.5%       |
| 95  | Great Easton Playing Field play area    | Great Easton            | 40.2%         | 38.2%       |
| 96  | Great Sampford play area                | Great Sampford          | 48.1%         | 45.5%       |
| 98  | Great Sampford skate park               | Great Sampford          | 43.3%         | 41.8%       |
| 103 | Hamel Way play area                     | Widdington              | 60.8%         | 38.2%       |

## UTTLESFORD DISTRICT COUNCIL OPEN SPACE UPDATE

| ID    | Site name                              | Settlement/ Parish area | Quality score | Value score |
|-------|--|-------------------------|---------------|-------------|
| 106   | Harvest Fields play area               | Takeley                 | 62.9%         | 32.7%       |
| 113   | High Easter Village Hall play area     | High Easter             | 48.5%         | 41.8%       |
| 117.1 | Hornsea Villas play area               | Stebbing                | 43.3%         | 38.2%       |
| 119   | Jigneys Meadow adventure playground    | Chrishall               | 42.3%         | 41.8%       |
| 121   | Jollys Boy Lane North play area        | Felsted                 | 59.1%         | 38.2%       |
| 122.1 | Jolly Boys Lane North MUGA             | Felsted                 | 52.6%         | 41.8%       |
| 132   | Littlebury Green play area             | Littlebury              | 50.5%         | 41.8%       |
| 134   | Littlebury recreation ground play area | Littlebury              | 45.4%         | 38.2%       |
| 135   | Long Horse Close play area             | Saffron Walden          | 73.9%         | 54.5%       |
| 136   | Long Lea play area                     | Langley                 | 44.0%         | 38.2%       |
| 138   | Lower Mill Field play area             | Great Dunmow            | 69.4%         | 38.2%       |
| 139   | Lower Street skate park                | Stansted Mountfitchet   | 71.8%         | 45.5%       |
| 144   | Manor Road play area                   | Little Easton           | 52.6%         | 38.2%       |
| 146   | Manuden play area                      | Manuden                 | 52.6%         | 41.8%       |
| 149   | Marks Hall Lane play area              | White Roding            | 47.4%         | 27.3%       |
| 153   | Meadow Ford play area                  | Newport                 | 63.2%         | 38.2%       |
| 154   | Meadows Mead play area                 | Hatfield Broad Oak      | 45.4%         | 41.8%       |
| 158   | Mill Road play area                    | Debden                  | 71.1%         | 41.8%       |
| 162   | Mortymmer Close play area              | Takeley                 | 41.2%         | 34.5%       |
| 165   | Moules Lane play area                  | Hadstock                | 48.5%         | 38.2%       |
| 167.1 | Mountfitchet Road play area            | Stansted Mountfitchet   | 51.2%         | 41.8%       |
| 167.2 | Mountfitchet Road MUGA <sup>6</sup>    | Stansted Mountfitchet   |               |             |
| 169   | Newbiggen Street play area             | Thaxted                 | 70.1%         | 41.8%       |
| 171   | Newmarket Road play area               | Great Chesterford       | 70.8%         | 45.5%       |
| 173   | Newmarket Road skate park              | Great Chesterford       | 48.5%         | 41.8%       |
| 175   | Oakroyd Avenue play area <sup>7</sup>  | Great Dunmow            |               |             |
| 185   | Petlands play area                     | Saffron Walden          | 45.4%         | 38.2%       |
| 186   | Pilgrim's Close play area 1            | Great Chesterford       | 51.5%         | 38.2%       |
| 187   | Pilgrim's Close play area 2            | Great Chesterford       | 30.9%         | 27.3%       |
| 188   | Pilgrim's Close play area 3            | Great Chesterford       | 61.2%         | 20.0%       |
| 195   | Radwinter Road play area               | Sewards End             | 69.1%         | 41.8%       |
| 198.1 | Ravens Crescent play area              | Felsted                 | 46.4%         | 38.2%       |
| 199   | Rectory Lane play area                 | Ashdon                  | 53.3%         | 29.1%       |
| 202   | Rectory Road play area                 | Farnham                 | 48.5%         | 41.8%       |
| 216   | St Nicholas Field play area            | Berden                  | 54.6%         | 45.5%       |
| 218   | Stanstead Park play area               | Stansted Mountfitchet   | 59.5%         | 45.5%       |
| 219.1 | Stansted Park recreation play area     | Stansted Mountfitchet   |               |             |

<sup>6</sup> Assessed as part of 167.1

<sup>7</sup> Site appears to be temporarily closed

# UTTLESFORD DISTRICT COUNCIL

## OPEN SPACE UPDATE

| ID    | Site name                            | Settlement/ Parish area | Quality score | Value score |
|-------|--------------------------------------|-------------------------|---------------|-------------|
| 223   | Elsenham play area                   | Little Canfield         | 50.5%         | 41.8%       |
| 224.1 | Station Road MUGA <sup>8</sup>       | Takeley                 | 64.6%         | 41.8%       |
| 224.2 | Station Road play area               | Takeley                 |               |             |
| 234   | Stokes Road, Priors Green play area  | Canfield                | 69.1%         | 34.5%       |
| 242   | Teybards Lay play area               | Great Dunmow            | 56.4%         | 45.5%       |
| 244   | Saffron Walden skate park            | Saffron Walden          | 75.3%         | 54.5%       |
| 245   | Thaxted Youth Club                   | Thaxted                 | 56.7%         | 27.3%       |
| 246   | The Causeway play area               | Great Dunmow            | 70.1%         | 41.8%       |
| 248   | The Causeway skate park              | Great Dunmow            | 48.5%         | 41.8%       |
| 255   | The Shaw play area                   | Hatfield Heath          | 58.8%         | 41.8%       |
| 259   | Tye Green play area                  | Wimbish                 | 44.3%         | 38.2%       |
| 269   | Walden Road recreation play area     | Radwinter               | 49.5%         | 38.2%       |
| 272   | Warwick Road, Priors Green play area | Little Canfield         | 41.2%         | 38.2%       |
| 273   | Watts Close play area                | Great Dunmow            | 59.1%         | 20.0%       |
| 280   | Walson Way play area                 | Stansted Mountfitchet   | 61.9%         | 54.5%       |
| 297.1 | Franklin Drive play area             | Elsenham                | 62.9%         | 38.2%       |
| 298   | Isabel Drive play area               | Elsenham                | 71.5%         | 41.8%       |
| 299   | Wicken Gardens play area             | Newport                 | 63.2%         | 41.8%       |
| 300.1 | Allard Way play area                 | Saffron Walden          | 72.9%         | 45.5%       |
| 301   | Mapletoft Avenue play area           | Saffron Walden          | 50.9%         | 41.8%       |
| 302   | Howlands Close play area             | Saffron Walden          | 57.7%         | 41.8%       |
| 303.1 | Miller Street                        | Saffron Walden          | 40.2%         | 29.1%       |
| 304   | Hibbert Drive play area              | Great Dunmow            | 72.9%         | 41.8%       |
| 305.1 | Hedgerow Grove play area             | Great Dunmow            | 48.1%         | 38.2%       |
| 306.1 | Oxlip Road play area                 | Stansted Mountfitchet   | 54.0%         | 50.9%       |
| 308.1 | Wilkin Crescent play area            | Stansted Mountfitchet   | 49.5%         | 38.2%       |
| 309   | Childs Lane play area                | Stansted Mountfitchet   | 61.5%         | 47.3%       |
| 310   | Reeve Road play areas                | Stansted Mountfitchet   | 49.1%         | 47.3%       |
| 311   | Felsted Crescent play area           | Stansted Mountfitchet   | 52.2%         | 38.2%       |

<sup>8</sup> Assessed as part of 224.2

# UTTLESFORD DISTRICT COUNCIL

## OPEN SPACE UPDATE

### 7.4 Quality

To determine whether sites are high or low quality (as recommended by guidance); the scores from the site assessments have been colour-coded against a baseline threshold (high being green and low being red). The table below summarises the results of the quality assessment for play provision for children and young people. A threshold of 45% is applied to identify high and low quality. Further explanation of the quality scoring and thresholds can be found in Part 2 (Methodology).

*Table 7.3: Quality ratings for provision for children and young people in Uttlesford*

| Scores (%)   |               |               | No. of sites |             |
|--------------|---------------|---------------|--------------|-------------|
| Lowest score | Average score | Highest score | Low (<45%)   | High (>45%) |
| 30%          | 54%           | 75%           | 12           | 76          |

The quality of provision is generally good across Uttlesford with 86% of sites assessed as above the threshold. There are 12 sites rating below the threshold. Notably there is a significant spread (52.6%) between the highest and lowest scoring sites, with Hornsea Villas play area (22.7%) compared to Saffron Walden skate park (75.3%).

Saffron Walden skate park, along with other high scoring sites, has entrances that open onto safe overlooked areas, good boundary fencing or controls to prevent illegal use, seating, litter bins and signage. Additionally, they are maintained to a high standard, with no significant wear and tear to equipment or evidence of litter or vandalism.

Examples of other high scoring sites include Long Horse Close play area, Lower Street skate park and Mill Road play area, which scored 73.9%, 71.8% and 71.1% respectively. The high-quality score for Lower Street skate park is unsurprising, given that it is relatively new.

The Shaw play area, although scoring well above the threshold at 58.8%, is reported to suffer from vandalism. This is highlighted through consultation with Hatfield Heath Parish Council.

Sites scoring lower for quality include Claypits Plantation BMX (29.9%), Pilgrim's Close play area 2 (30.9%), Miller Street play area (40.2%) and Great Easton Playing Field play area (40.2%). These sites generally have fewer ancillary features or equipment and are often reported to have evidence of wear and tear. Furthermore, overall maintenance and cleanliness of the sites is not as high.

### 7.5 Value

To determine whether sites are high or low value (as recommended by the Companion Guidance) site assessment scores are colour-coded against a baseline threshold (high being green and low being red). The table overleaf summarises the results of the value assessment for children and young people. A threshold of 20% is applied to identify high and low value. Further explanation of the value scoring and thresholds can be found in Part 2 (Methodology).

# UTTLESFORD DISTRICT COUNCIL

## OPEN SPACE UPDATE

Table 7.4: Value ratings for provision for children and young people in Uttlesford

| Scores (%)   |               |               | No. of sites |             |
|--------------|---------------|---------------|--------------|-------------|
| Lowest score | Average score | Highest score | Low (<20%)   | High (>20%) |
| 20%          | 40%           | 55%           | 0            | 88          |

All play provision in Uttlesford is rated as being above the threshold for value. This demonstrates the role play provision provides in allowing children to play but also the contribution sites make in terms of giving children and young people safe places to learn, for physical and mental activity, to socialise with others and in creating aesthetically pleasing local environments.

Sites scoring particularly high for value tend to reflect a good range of quality equipment available at sites:

- ◀ Anglo American Playing Fields play area (54.4%)
- ◀ Birchanger Lane recreation ground (50.0%)
- ◀ Clarendon Road play area (54.4%)
- ◀ Long Horse Close play area (54.4%)
- ◀ Saffron Walden skate park (54.4%)

The sites are observed as being well maintained with a good to reasonable variety of equipment, as well as having sufficient access. The sites are also assumed to be well used given their range and quality of equipment.

Despite Anglo American Playing Fields play area scoring above the value threshold, it is observed as appearing old with the basketball courts having no lights.

Diverse equipment to cater for a range of ages and abilities is important and can significantly impact on value. Provision such as skate park facilities and MUGAs are often highly valued forms of play.

It is also important to recognise the benefits of play in terms of healthy, active lifestyles, social inclusion and interaction plus developmental and educational value. The importance of play and of children's rights to play in their local communities is essential.

### 7.6 Summary

#### Provision for children and young people summary

- ◀ There are 88 play provision sites in Uttlesford: a total of nearly 10 hectares.
- ◀ FIT suggests 0.25 hectares per 1,000 population as a guideline quantity standard. Overall, Uttlesford has a current provision level of 0.11 hectares per 1,000 population.
- ◀ The mapping highlights that nearly all settlements across the district have access to at least one form of play area. The exceptions to this are Little Hallingbury and Rickling Green.
- ◀ Quality of provision is generally good with 86% of sites assessed as above the threshold.
- ◀ All play provision rates above the threshold for value; reflecting the social, healthy and developmental benefits provision can provide.

# UTTLESFORD DISTRICT COUNCIL

## OPEN SPACE UPDATE

---

### PART 8: ALLOTMENTS

#### 8.1 Introduction

Allotments are a typology which covers open spaces that provide opportunities for those people who wish to do so, to grow their own produce as part of the long-term promotion of sustainability, health and social interaction. This includes provision such as allotments, community gardens, city farms and community food growing areas.

#### 8.2 Current provision

There are 29 sites classified as allotments in Uttlesford, equating to over 18 hectares. This is an increase of 2 sites and 1ha since 2019. No site size threshold has been applied to allotments and as such all known provisions are identified and included within the audit.

*Table 8.1: Distribution of allotments*

| Analysis area         | Number of sites | Total hectares (ha) | Current provision (ha per 1,000 population) |
|-----------------------|-----------------|---------------------|---|
| Saffron Walden        | 6               | 5.71                | 0.38  |
| Great Dunmow          | 1               | 1.26                | 0.12  |
| Rural Area            | 20              | 10.86               | 0.19  |
| Stansted Mountfitchet | 2               | 0.78                | 0.09  |
| <b>Uttlesford</b>     | <b>29</b>       | <b>18.62</b>        | <b>0.20</b>                                 |

The National Society of Allotment and Leisure Gardeners (NSALG) suggests a national standard of 20 allotments per 1,000 households (20 per 2,000 people based on two people per house or one per 100 people). This equates to 0.25 hectares per 1,000 populations, based on an average plot-size of 250 square metres (0.025 hectares per plot).

Based on Uttlesford's current population (91,306) it does not meet the NSALG standard. Using this suggested standard, the minimum amount of allotment provision for Uttlesford is 22.83 hectares. The existing provision of 18.62 hectares therefore does not meet this guideline.

The majority of allotment sites are managed by parish councils. Therefore, exact plot number and waiting lists are difficult to fully attain. Information has; however, been obtained for some allotment sites and is set out in Table 8.2.

# UTTLESFORD DISTRICT COUNCIL

## OPEN SPACE UPDATE

Table 8.2: Allotment information (where known)

| ID  | Site                                 | Information  |
|-----|--------------------------------------|--|
| 270 | Waldgrooms allotments                | Managed by Great Dunmow Town Council and has circa 100 plots. No waiting lists due to recent changeover of tenants. Water bills.   |
| 93  | Frambury Lane allotments             | Owned and managed by Newport Parish Council. Plot numbers not specified. However, there is currently no waiting list. New development in area will provide allotments too.   |
| 142 | Magdalen Green allotments            | Managed by Thaxted Parish Council. This site and KKP 13, Bardfield Road Allotments have circa 17 plots. Rarely any waiting lists. No need for any more.  |
| 58  | Church Lane allotments               | Managed by Elsenham Parish Council. Site owned by the church. Circa 22 plots. Church will require land for burial in 10 years. A new allotment as part of housing development is to be provided. Currently 20 people on the waiting list for this (five from the existing allotment). A new site now exists. |
| 131 | Little Walden Road allotments        | Managed by Saffron Walden Town Council. Only statutory allotments. Circa 40 plots.   |
| 73  | Crocus Fields allotments             | Managed by Saffron Walden Town Council. Is on 50-year lease from farmer. Circa 28 plots.   |
| 275 | Windmill Hill allotments             | Managed by Saffron Walden Town Council. Land owned by farmer.  |
| 110 | High Easter allotments               | Managed by High Easter Parish Council. Circa six plots.  |
| 237 | Stortford Road allotments, Clavering | Managed by Clavering Parish Council. Number of plots not identified. Currently no waiting list.  |
| 157 | Mill Road allotments                 | Managed by Debden Parish Council. Circa 36 plots. Currently no waiting list.   |
| 160 | Mill Road/Station Road allotments    | Managed by Felsted Parish Council. Circa 67 plots. Currently no waiting list.  |
| 114 | High Roding allotments               | Managed by Aythorpe Roding Parish Council. Circa nine plots. Currently no waiting list.  |
| 293 | Hatfield Heath allotments            | 21 plots. Well used. Waiting lists exists. Access to water. Car park.  |

### 8.3 Accessibility

Figure 8.1 show allotments mapped against analysis areas, with a 15-minute walk time applied. This is based on the catchments used in the 2019 study.

Takeley is the largest settlement without allotment provision within a 15-minute walk time catchment.

# UTTLESFORD DISTRICT COUNCIL OPEN SPACE UPDATE

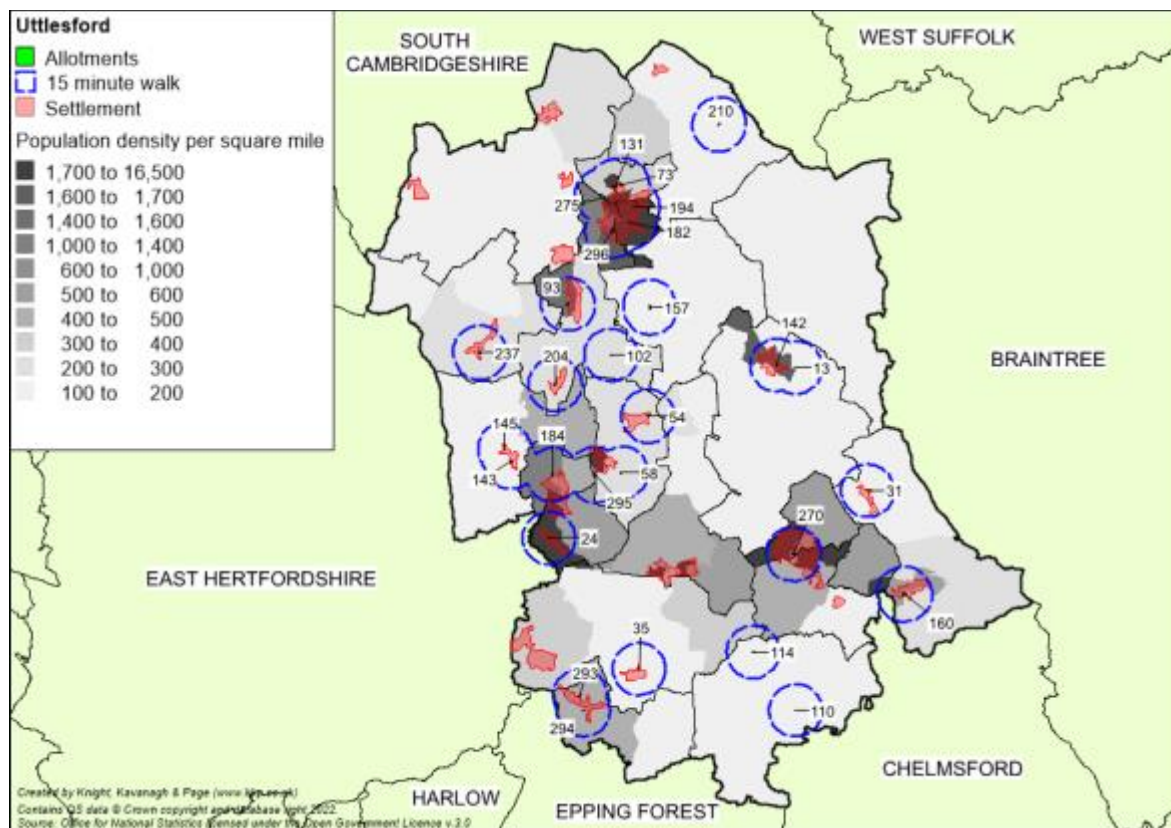


Figure 8.1: Allotments mapped

Table 8.3: Key to sites mapped

| ID  | Site name                          | Parish             | Quality Score | Value score |
|-----|------------------------------------|--------------------|---------------|-------------|
| 13  | Bardfield Road allotments          | Thaxted            | 46.2%         | 21.9%       |
| 24  | Birchanger Lane allotments         | Birchanger         | 51.7%         | 27.6%       |
| 31  | Brick Kiln Lane allotments         | Stebbing           | 46.2%         | 21.9%       |
| 35  | Broad Street allotments            | Hatfield Broad Oak | 44.5%         | 21.9%       |
| 54  | Chickney Road allotments           | Henham             | 51.1%         | 26.7%       |
| 58  | Church Lane allotments             | Elsenham           | 31.9%         | 23.8%       |
| 73  | Crocus Fields allotments           | Saffron Walden     | 48.9%         | 21.9%       |
| 93  | Frambury Lane allotments           | Newport            | 61.5%         | 21.9%       |
| 102 | Hamel Way allotments               | Widdington         | 48.9%         | 21.9%       |
| 110 | High Easter allotments, The Street | High Easter        | 46.7%         | 21.9%       |
| 114 | High Roding allotments, The Street | High Roothing      | 41.2%         | 23.8%       |
| 131 | Little Walden Road allotments      | Saffron Walden     | 50.6%         | 22.9%       |
| 142 | Magdalen Green allotments          | Thaxted            | 50.0%         | 21.9%       |
| 143 | Mallows Green Road allotments      | Manuden            | 41.2%         | 21.9%       |
| 145 | Manuden allotments, The Street     | Manuden            | 42.9%         | 21.9%       |
| 157 | Mill Road allotments               | Debden             | 50.6%         | 21.9%       |

# UTTLESFORD DISTRICT COUNCIL OPEN SPACE UPDATE

| ID  | Site name                            | Parish                | Quality Score | Value score |
|-----|--------------------------------------|-----------------------|---------------|-------------|
| 160 | Mill Road/Station Road allotments    | Felsted               | 45.6%         | 23.8%       |
| 182 | Peaslands Road allotments            | Saffron Walden        | 42.3%         | 22.9%       |
| 184 | Pennington Lane allotments           | Stansted Mountfitchet | 36.8%         | 23.8%       |
| 194 | Radwinter Road allotments            | Saffron Walden        | 40.3%         | 22.9%       |
| 204 | Rickling Green Road allotments       | Quendon and Rickling  | 46.7%         | 21.9%       |
| 210 | Roger's End allotments               | Ashdon                | 46.2%         | 32.4%       |
| 237 | Stortford Road allotments, Clavering | Clavering             | 47.8%         | 21.9%       |
| 270 | Waldgrooms allotments                | Great Dunmow          | 58.8%         | 23.8%       |
| 275 | Windmill Hill allotments             | Saffron Walden        | 41.2%         | 23.8%       |
| 293 | Hatfield Heath allotments 1          | Hatfield Heath        | 48.9%         | 26.7%       |
| 294 | Hatfield Heath allotments 2          | Hatfield Heath        | 59.3%         | 28.6%       |
| 295 | Smith Road allotments                | Elsenham              | 65.7%         | 23.8%       |
| 296 | Rowntree Way allotments              | Saffron Walden        |               |             |

## 8.4 Quality

To determine whether sites are high or low quality (as recommended by the Companion Guidance) the site assessment scores have been colour-coded against a baseline threshold (high being green and low being red). The table below summarises the results of the quality assessment for allotments. A threshold of 40% is applied to identify high and low quality. Further explanation of how the quality scores and thresholds are derived can be found in Part 2 (Methodology).

Table 8.4: Quality ratings for allotments in Uttlesford

| Scores (%)   |               |               | No. of sites |             |
|--------------|---------------|---------------|--------------|-------------|
| Lowest score | Average score | Highest score | Low (<40%)   | High (>40%) |
| 32%          | 48%           | 66%           | 2            | 26          |

One site does not receive a quality or value score. The Rowntree Allotment site was not viewable and therefore could not be assessed.

The majority of sites rate above the quality threshold (85%), suggesting a high standard of allotment provision in Uttlesford. The highest rating sites are:

- ◀ Smith Road Allotment Gardens (66%)
- ◀ Frambury Lane allotments (61.5%)
- ◀ Hatfield Heath allotment 2 (59.3%)
- ◀ Waldgrooms allotments (58.8%)

The sites score highly for general levels of maintenance and cleanliness, surrounding fencing and controls to prevent illegal use, as well as a sense of personal security on site and informative signage. Smith Road, Hatfield Heath, Waldgrooms and Frambury Lane also have onsite parking and well cared for sheds and greenhouses.

# UTTLESFORD DISTRICT COUNCIL

## OPEN SPACE UPDATE

The two sites which score below the quality threshold are not identified as having any specific quality issues and their lower quality scores can be attributed to fewer features and pathways which are not maintained to as a higher standard.

### 8.5 Value

To determine whether sites are high or low value (as recommended by the Companion Guidance) site assessments scores have been colour-coded against a baseline threshold (high being green and low being red). The table below summarises the results. A threshold of 20% is applied to identify high and low value. Further explanation of how the value scores and thresholds are derived can be found in Part 2 (Methodology).

Table 8.5: Value ratings for allotments in Uttlesford

| Scores (%)   |               |               | No. of sites |             |
|--------------|---------------|---------------|--------------|-------------|
| Lowest score | Average score | Highest score | Low (<20%)   | High (>20%) |
| 22%          | 24%           | 32%           | 0            | 28          |

All allotments rate above the threshold for value. This reflects the associated social inclusion and health benefits, amenity value and the sense of place offered by such forms of provision.

Allotments should generally be considered as highly valued as they are often identified by the local community as important forms of open space provision.

### 8.6 Summary

| Allotments summary  |
|---|
| <ul style="list-style-type: none"> <li>◀ There are 29 sites classified as allotments in Uttlesford, equating to over 18 hectares.</li> <li>◀ Based on Uttlesford's current population (91,306) it does not meet the NSALG standard. Using this suggested standard, the minimum amount of allotment provision for Uttlesford is 22 hectares. The existing provision of 18 hectares therefore does not meet this guideline.</li> <li>◀ The majority of allotment sites are managed by parish councils.</li> <li>◀ The majority of sites rate above the quality threshold (93%), suggesting a high standard of allotment provision in Uttlesford. The four sites to score below the quality threshold are not identified as having any specific quality issues.</li> <li>◀ All allotments rate above the threshold for value. This reflects the associated social inclusion and health benefits, amenity value and the sense of place offered by such forms of provision.</li> </ul> |

# UTTLESFORD DISTRICT COUNCIL

## OPEN SPACE UPDATE

### PART 9: PROVISION STANDARDS

The provision standards used to determine deficiencies and surpluses for open space are set in terms of quality, accessibility, and quantity.

#### 9.1: Quality and value

Each type of open space receives a separate quality and value score. This also allows for the application of a high and low quality/value matrix to further help determine prioritisation of investment and to identify sites that may be surplus, as a particular open space type.

##### *Quality and value matrix*

Assessing the quality and value of open spaces is used to identify those sites which should be given the highest level of protection, those which require enhancement and those which may no longer be needed for their present purpose. When analysing the quality/value of a site, it should be done in conjunction with the quantity and/or accessibility of provision in the area (i.e., whether there is a deficiency).

The high/low classification gives the following possible combinations of quality and value:

|            | High Quality   | Low Quality  |
|------------|--|--|
| High Value | All sites should have an aspiration to come into this category. Many sites of this category are likely to be viewed as key forms of open space provision.  | The approach to these sites should be to enhance their quality to the applied standard. The priority will be those sites providing a key role in terms of access to provision.   |
| Low Value  | The preferred approach to a site in this category should be to enhance its value in terms of its present primary function. If this is not possible, consideration to a change of primary function should be given (i.e., a change to another open space typology). | The approach to these sites in areas of identified shortfall should be to enhance their quality, provided it is also possible to enhance their value.<br><br>In areas of sufficiency a change of primary typology should be considered first. If no shortfall of other open space typologies is noted then the site may be redundant/ 'surplus to requirements'. |

There is a need for flexibility in the enhancement of low-quality sites. In some instances, a better use of resources and investment may be to focus on more suitable sites for enhancement as opposed to trying to enhance sites where it is not appropriate or cost effective to do so. Please refer to the individual typology sections as well as the supporting excel database for a breakdown of the matrix.

#### 9.2: Accessibility

Accessibility catchments are a tool to identify communities currently not served by existing facilities. It is recognised that factors underpinning catchment areas vary from person to person, day to day and hour to hour. For the purposes of this process the concept of 'effective catchments' is used, defined as the distance that most users would travel. The accessibility catchments do not consider if a distance is on an incline or decline. They are therefore intended to act as an initial form of analysis to help identify potential gaps.

# UTTLESFORD DISTRICT COUNCIL

## OPEN SPACE UPDATE

Table 9.2.1: Accessibility catchments

| Open space type                         | Catchment  |
|---|--|
| Parks & Gardens                         | 15-minute walk time  |
| Natural & Semi-natural Greenspace       | 30-minute drive time<br>15-minute walk time                |
| Amenity Greenspace                      | 15-minute walk time  |
| Provision for children and young people | 10-minute walk time<br>15-minute walk time for skate parks |
| Allotments                              | 15-minute walk   |

If an area does not have access to provision (consistent with the catchments) it is deemed deficient. KKP has identified instances where new sites may be needed, or potential opportunities could be explored to provide comprehensive access (i.e., a gap in one form of provision may exist but the area in question may be served by another form of open space). Please refer to the associated mapping to view site catchments.

The following tables summarise the deficiencies identified from the application of the accessibility standards. In determining any subsequent actions for identified gaps, the following are key principles for consideration:

- ◀ Increase capacity/usage to meet increases in demand, or
- ◀ Enhance quality to meet increases in demand, or
- ◀ Commuted sum for ongoing maintenance/repairs to mitigate impact of new demand.

These principles are intended to mitigate the impact of increases in demand on existing provision. An increase in population will reduce the lifespan of certain sites and/or features (e.g., play equipment, maintenance regimes etc.). This will lead to the increased requirement to refurbish and/or replace such forms of provision.

### Great Dunmow

Table 9.2.2: Great Dunmow accessibility summary

| Typology                                | Catchment gap  | Action   |
|---|--|--|
| Parks and gardens                       | ◀ Gaps in 15-minute walk time catchment.                                   | ◀ Gap is served by other forms of provision such as amenity (e.g., the Causeway recreation ground and Teybards Lay). |
| Amenity Greenspace                      | ◀ No gaps in 10-minute walk time catchment.                                | n/a  |
| Natural and semi-natural greenspace     | ◀ No gaps in 30-minute drive time<br>◀ Gap in 15-minute walk time to west. | ◀ Opportunities to create provision should be explored   |
| Provision for children and young people | ◀ No gaps in walk time catchments.   | n/a  |
| Allotments                              | ◀ No significant gaps in 15-minute walk time catchment.                    | n/a  |

# UTTLESFORD DISTRICT COUNCIL

## OPEN SPACE UPDATE

### Rural Area

Table 9.2.3: Rural area accessibility summary

| Typology                                | Catchment gap  | Action   |
|---|--|--|
| Parks and gardens                       | <ul style="list-style-type: none"> <li>◀ Gaps in 15-minute walk time catchment noted in settlements with greater density such as Thaxted and Newport.</li> </ul>   | <ul style="list-style-type: none"> <li>◀ Gaps are served by other forms of provision such as amenity greenspaces e.g. Newbiggen Street playing field (Thaxted), Station Road Common (Newport) and Meadow Ford (Newport).</li> </ul>                                  |
| Amenity Greenspace                      | <ul style="list-style-type: none"> <li>◀ No significant gaps in 10-minute walk time catchment.</li> <li>◀ Chrishall is the only settlement observed as not being served by provision.</li> </ul>         | <ul style="list-style-type: none"> <li>◀ Given the low population density it is unlikely new provision will be required. If opportunities are presented to provide such provision, this should be explored.</li> </ul>   |
| Natural and semi-natural greenspace     | <ul style="list-style-type: none"> <li>◀ No gaps in 30-minute drive time. Minor gaps in 15-minute walk time noted in settlements with greater population density such as Felsted and Newport.</li> </ul> | <ul style="list-style-type: none"> <li>◀ Gap covered by 30-minute drive time.</li> <li>◀ May also be served to some extent by other forms of provision such as Jollys Boy north playing field (Felsted), and Station Road common / meadow ford (Newport).</li> </ul> |
| Provision for children and young people | <ul style="list-style-type: none"> <li>◀ No significant gaps in walk time catchments.</li> </ul>   | n/a  |
| Allotments                              | <ul style="list-style-type: none"> <li>◀ Gap in 15-minute walk time catchment observed to settlement of Takeley.</li> </ul>  | <ul style="list-style-type: none"> <li>◀ Opportunities to create provision should be explored.</li> </ul>  |

### Saffron Walden

Table 9.2.4: Saffron Walden accessibility summary

| Typology                                | Catchment gap   | Action  |
|---|---|---|
| Parks and gardens                       | <ul style="list-style-type: none"> <li>◀ Minor gap in 15-minute walk time catchment to south.</li> </ul>    | <ul style="list-style-type: none"> <li>◀ Gap is served by other forms of provision such as amenity greenspaces (e.g. Greenways, Blacklands Close and Beeches Close).</li> </ul> |
| Amenity Greenspace                      | <ul style="list-style-type: none"> <li>◀ No significant gaps in 10-minute walk time catchment</li> </ul>    | n/a   |
| Natural and semi-natural greenspace     | <ul style="list-style-type: none"> <li>◀ No gaps in 30-minute drive time or 15-minute walk time.</li> </ul> | n/a   |
| Provision for children and young people | <ul style="list-style-type: none"> <li>◀ No significant gaps in walk time catchments.</li> </ul>            | n/a   |
| Allotments                              | <ul style="list-style-type: none"> <li>◀ No significant gaps in 15-minute walk time catchment.</li> </ul>   | n/a   |

# UTTLESFORD DISTRICT COUNCIL

## OPEN SPACE UPDATE

### **Stansted Mountfitchet**

Table 9.2.5: Stansted Mountfitchet accessibility summary

| Typology                                | Catchment gap  | Action   |
|---|--|--|
| Parks and gardens                       | ◀ Gap in 15-minute walk time catchment.                | ◀ Gap is served by other forms of provision such as amenity greenspaces (e.g., Stansted Park recreation ground, Bentfield Gardens, Herrington Avenue and Mountfitchet Road). |
| Amenity greenspace                      | ◀ No gaps in 10-minute walk time catchment.            | n/a  |
| Natural and semi-natural greenspace     | ◀ Gap in 15-minute walk catchment.                     | ◀ Likely to be served to some extent by provision, such as Birchanger Wood.  |
| Provision for children and young people | ◀ No significant gaps in walk time catchments.         | n/a  |
| Allotments                              | ◀ No significant gap in 15-minute walk time catchment. | n/a  |

### **9.3: Quantity**

Quantity standards can be used to identify areas of shortfalls and help with determining requirements for future developments.

#### **Setting quantity standards**

The setting and application of quantity standards is necessary to determine shortfalls in provision and to ensure new developments contribute to the provision of open space across the area.

Shortfalls in quality and accessibility standards are identified across the district for different types of open space (as set out in Parts 9.1 and 9.2). Consequently, the Council should seek to ensure new developments contribute to the overall provision of open space.

The current provision levels are used as a basis to inform and identify potential shortfalls in existing provision. These can also be used to help determine future requirements as part of new developments.

# UTTLESFORD DISTRICT COUNCIL

## OPEN SPACE UPDATE

---

*Table 9.3.1: Summary of current provision levels*

| Typology                              | Quantity level<br>(Hectares per 1,000 population) |
|---------------------------------------|---|
| Parks & gardens                       | 0.10  |
| Natural & semi-natural greenspace     | 5.58 <sup>9</sup>                                 |
| Amenity greenspace                    | 1.60  |
| Provision for children & young people | 0.11  |
| Allotment                             | 0.20  |

Current provision levels are used to inform quantity as opposed to benchmarks such as those suggested by FIT. The national benchmark quantity standards are not deemed as appropriate for use as they do not take into consideration the local circumstances, distribution, and historical trends of the area.

An approach using locally derived quantity standards ensures more reflective standards are set as they are based on and take consideration to current local provision levels and views.

The current provision levels can be used to help identify where areas may have a shortfall. Table 9.3.2 shows the position for each sub-area as to whether it is sufficient or identified as having a shortfall for each type of open space.

---

<sup>9</sup> 1.39 hectares per 1,000 population if Hatfield Forest is omitted from figures.

# UTTLESFORD DISTRICT COUNCIL OPEN SPACE UPDATE

Table 9.3.2a: Current provision shortfalls by analysis area (hectares per 1,000 population)

| Analysis area         | Parks and gardens |        | Natural & semi-natural |       | Amenity greenspace |       | Allotments        |       | Play provision    |       |
|-----------------------|-------------------|--------|------------------------|-------|--------------------|-------|-------------------|-------|-------------------|-------|
|                       | Current provision | + / -  | Current provision      | + / - | Current provision  | + / - | Current provision | + / - | Current provision | + / - |
| Saffron Walden        | 0.59              | +0.49  | 0.08                   | -5.50 | 0.96               | -0.64 | 0.38              | +0.18 | 0.11              | level |
| Great Dunmow          | -                 | -0.10  | 2.02                   | -3.56 | 1.28               | -0.32 | 0.12              | -0.08 | 0.07              | -0.04 |
| Rural Area            | 0.002             | -0.098 | 8.11                   | +2.53 | 1.95               | +0.35 | 0.19              | -0.01 | 0.11              | level |
| Stansted Mountfitchet | -                 | -0.10  | 2.48                   | -3.10 | 0.81               | -0.79 | 0.09              | -0.11 | 0.10              | -0.01 |

All analysis areas are observed as having shortfalls in some form of open space. Against the recommended standards, Great Dunmow and Stansted Mountfitchet are identified as having quantity shortfalls against all open space types. If Hatfield Forest is omitted from the natural and semi-natural figures (Table 9.3.2b), a shortfall in Great Dunmow is no longer noted.

Table 9.3.2b: Current provision shortfalls by analysis area (hectares per 1,000 population) – excluding Hatfield Forest

| Analysis area         | Parks and gardens |        | Natural & semi-natural |       | Amenity greenspace |       | Allotments        |       | Play provision    |       |
|-----------------------|-------------------|--------|------------------------|-------|--------------------|-------|-------------------|-------|-------------------|-------|
|                       | Current provision | + / -  | Current provision      | + / - | Current provision  | + / - | Current provision | + / - | Current provision | + / - |
| Saffron Walden        | 0.59              | +0.49  | 0.08                   | -1.31 | 0.96               | -0.64 | 0.38              | +0.18 | 0.11              | level |
| Great Dunmow          | -                 | -0.10  | 2.02                   | +0.63 | 1.28               | -0.32 | 0.12              | -0.08 | 0.07              | -0.04 |
| Rural Area            | 0.002             | -0.098 | 1.46                   | +0.07 | 1.95               | +0.35 | 0.19              | -0.01 | 0.11              | level |
| Stansted Mountfitchet | -                 | -0.10  | 2.48                   | -1.09 | 0.81               | -0.79 | 0.09              | -0.11 | 0.10              | -0.01 |

### 9.4: Identifying priorities and recommendations

Several quantity shortfalls in the open space typologies are highlighted. However, creating new provision to address these shortfalls (particularly any quantity shortfalls) is often challenging (as significant amounts of new forms of provision would need to be created). Often a more realistic approach is to ensure sufficient accessibility and quality of existing provision.

The following provides a summary of the key findings through the application of the standards. It incorporates and recommends that the council should be seeking to help address the issues highlighted.

#### **Recommendation 1**

- ◀ ***Provision standards should be used to inform and help determine future requirements***

Exploring opportunities to enhance existing provision and linkages to these sites should be endorsed. Further insight into the shortfalls is provided within each provision standard summary (Parts 9.1, 9.2 and 9.3).

Quantity levels should still be utilised to indicate the potential lack of provision that any given area may have. However, this should be done in conjunction with the accessibility and quality of provision in the area.

The current provision levels could be used to determine the open space requirements as part of new housing developments. In the first instance, all types of provision should look to be provided as part of new housing developments.

If this is not considered viable, the column signalling whether an area is sufficient or has a quantity shortfall may be used to help inform the priorities for each type of open space within each area (i.e., the priorities may be where a shortfall has been identified).

#### **Recommendation 2**

- ◀ ***Sites helping, or with the potential to help, serve areas identified as having gaps in catchment mapping, should be prioritised as opportunities for enhancement***

Part 9.2 identifies sites that help or have the potential to serve existing identified gaps in provision (p49-51).

These sites potentially help to meet the identified catchment gaps for other open space typologies. Where possible, the council may seek to adapt these sites to provide a stronger secondary role, to help meet the gaps highlighted.

Often this is related to parks, amenity greenspace and natural and semi-natural greenspace. The council should explore the potential/possibility to adapt these sites through formalisation and/or greater provision of features linked to other types of open space. This is to provide a stronger secondary role as well as opportunities associated with other open space types.

## UTTLESFORD DISTRICT COUNCIL OPEN SPACE UPDATE

---

This may, in some instances, also help provide options to minimise the need for creation of new provision to address any gaps in catchment mapping. For play provision, sites could be explored for opportunities to expand the amount and breadth of equipment at existing play sites.

These sites should therefore be viewed as open space provision that are likely to provide multiple social and value benefits. It is also important that the quality and value of these sites is secured and enhanced.

These sites should first look to be enhanced in terms of quality. Consideration should be given to changing the primary typology or strengthening the secondary function of these sites, to one which they currently help to serve a gap in provision, even if their quality cannot currently be enhanced. For some sites, such as natural and semi-natural greenspace, the ability to adapt or strengthen secondary roles may be limited due to the features and characteristics of the site.

It is important that other factors, such as the potential typology change of a site creating a different catchment gap and/or the potential to help serve deficiencies in other types of provision should also be considered. The council may also be aware of other issues, such as the importance of a site for heritage, biodiversity or as a visual amenity that may also indicate that a site should continue to stay the same typology.

### **Recommendation 3**

#### **◀ *Keeping data, report and supporting evidence base up to date to reflect changes over time***

The study provides a snapshot in time. Whilst significant changes are not as common for open space provision, inevitably over time changes in provision occur through the creation of new provision, loss of existing provision and/or alterations to site boundaries and management. Population change and housing growth are also another consideration to review when undertaking any form of update as this may impact on quantity provision levels and standards. It is therefore important, particularly given the growing recognition of open space provision because of Covid-19, for the council to undertake regular reviews of the data and/or actions informed by it.

# UTTLESFORD DISTRICT COUNCIL

## OPEN SPACE UPDATE

---

### PART 10: FUTURE GROWTH SCENARIO

Future need for open space will arise from the population increases from potential housing growth developments. Two methods are presented to calculate open space requirements; one using the standard methodology and another using Objectively Assessed Need for Housing.

Please note that the scenarios should be updated as required over the Local Plan period to reflect changes in population projections and average household sizes.

The recommended quantity provision standards for Uttlesford are applied to determine the requirement for open space provision if the current levels of provision are to be maintained.

The formula to determine the initial amount of open space provision required is:

$$\text{New/additional population from development} \times \text{quantity standard} / 1000$$

#### Method One: Standard Methodology

The standard methodology identifies a housing requirement of 684 dwellings per annum for Uttlesford<sup>10</sup>. Over a 10-year period this would be 6,840 dwellings. The indicative population figure (16,416) assumes that population growth will average 2.4<sup>11</sup> persons per dwelling.

On this basis, the following open space requirements are calculated:

*Table 10.1: Future open space requirement (standard methodology)*

| Open space type                                 | Quantity standards (per 1,000 population) | Future requirement (hectares) |
|---|---|-------------------------------|
| Parks & gardens                                 | 0.10                                      | 1.64                          |
| Natural & semi-natural greenspace <sup>12</sup> | 1.39                                      | 22.82                         |
| Amenity greenspace                              | 1.60                                      | 26.27                         |
| Allotment                                       | 0.20                                      | 3.28                          |
| Provision for children & young people           | 0.11                                      | 1.81                          |

<sup>10</sup> 5 year Land Supply Statement and Housing Trajectory (October 2023)

<sup>11</sup> Source: ONS Families and household (2022)

<sup>12</sup> If Hatfield Forest is included, a standard of 5.58 is noted, meaning a future requirement of 91.60 hectares

# UTTLESFORD DISTRICT COUNCIL

## OPEN SPACE UPDATE

---

### Method Two: Objectively Assessed Need for Housing

The Objectively Assessed Need for Housing<sup>13</sup> identifies a housing requirement of 13,500 new homes up to 2041. This would provide an indicative population figure of 32,400 assuming that population growth will average 2.4<sup>14</sup> persons per dwelling.

On this basis, the following open space requirements are calculated:

*Table 10.2: Future open space requirement (objectively assessed need)*

| Open space type                                 | Quantity standards<br>(per 1,000 population) | Future requirement<br>(hectares) |
|---|--|----------------------------------|
| Parks & gardens                                 | 0.10   | 3.24                             |
| Natural & semi-natural greenspace <sup>15</sup> | 1.39   | 45.04                            |
| Amenity greenspace                              | 1.60   | 51.84                            |
| Allotment                                       | 0.20   | 6.48                             |
| Provision for children & young people           | 0.11   | 3.56                             |

The figures provide an initial indication of the levels of open space provision required because of new housing growth for the current levels of provision to be maintained. It should be treated as a starting point for further exploration and negotiation to ensure new populations are served by adequate open space provision.

It can also help to further strengthen existing plans. For example, there have previously been suggestions of a country park within the district as part of future plan proposals. This could help alleviate some of the pressures at significant sites such as those highlighted at Hatfield Forest. The creation of a country park could also contribute in a multifunctional role to the levels of park provision and natural greenspace need as part of future open space requirements.

---

<sup>13</sup> Local Housing Need Assessment (JG Consulting, May 2024)

<sup>14</sup> Source: ONS Families and household (2022)

<sup>15</sup> If Hatfield Forest is included, a standard of 5.58 is noted, meaning a future requirement of 180.79 hectares

