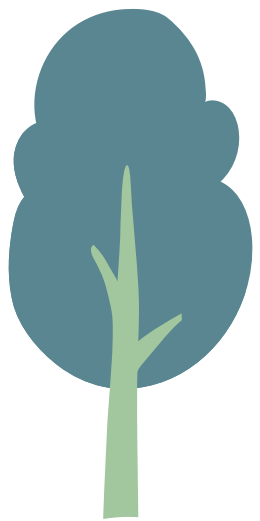


# VISION STATEMENT



Over the period of this Plan, Little Hallingbury will continue to be an attractive, rural Village with a strong sense of community which continues to be a friendly, safe and desirable place to live.



The countryside and green spaces around the Village will be preserved, along with access to countryside walks, open views and wildlife habitats.



The heritage buildings and assets which give the Village its character will be retained to be enjoyed by future generations.



Housing development and improvements will respect the Green Belt and Village development boundaries, and will be well-designed, in keeping with the character of the Parish, positively contributing to the immediate surroundings.



Proposed housing development will reflect a mix of types and sizes, reflecting Little Hallingbury's needs.

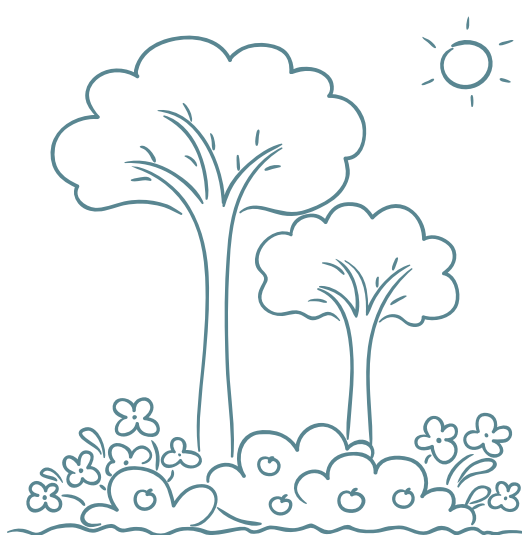
# OBJECTIVES

**UNDERPINNING THE LHNP VISION ARE A NUMBER OF CORE OBJECTIVES.**

**THE HEADLINE OBJECTIVES ARE:**



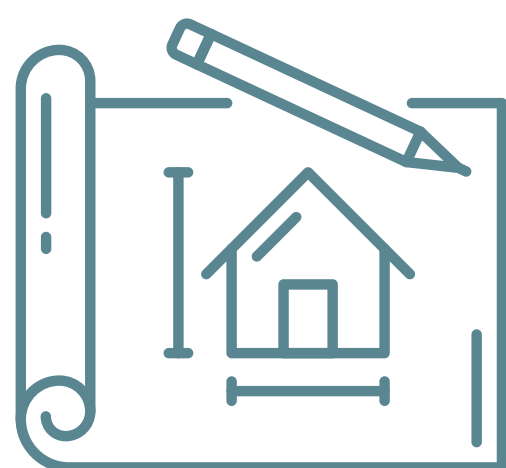
Protect our heritage



Protect our open green spaces



Protect the landscape character and important views in the Village



Ensure development meets local needs



Keep Little Hallingbury's character through good design



Look after our wildlife and environment



Support essential amenities and services for residents



Maintain the sense of community



Support businesses and employment



Support Climate Change low energy solutions for new buildings